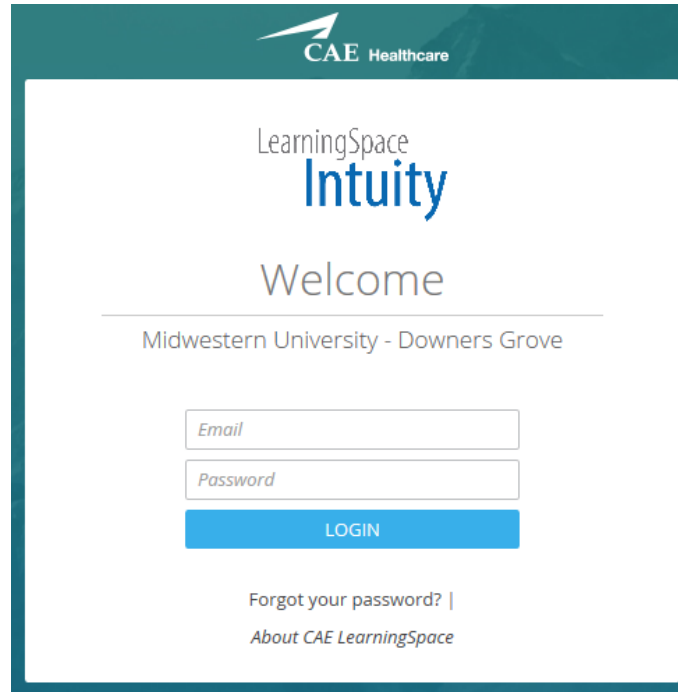


**MIDWESTERN UNIVERSITY
CLINICAL SKILLS AND SIMULATION CENTER**

SECTION 1: INSTRUCTIONS FOR  LOGIN

<https://i.learningSpace.midwestern.edu/>



CAE Healthcare

LearningSpace
Intuity

Welcome

Midwestern University - Downers Grove

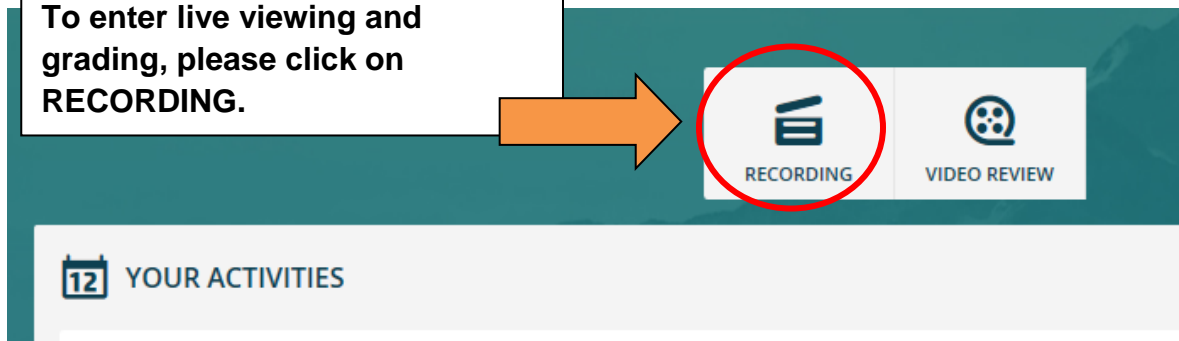
LOGIN

[Forgot your password? |](#)
[About CAE LearningSpace](#)

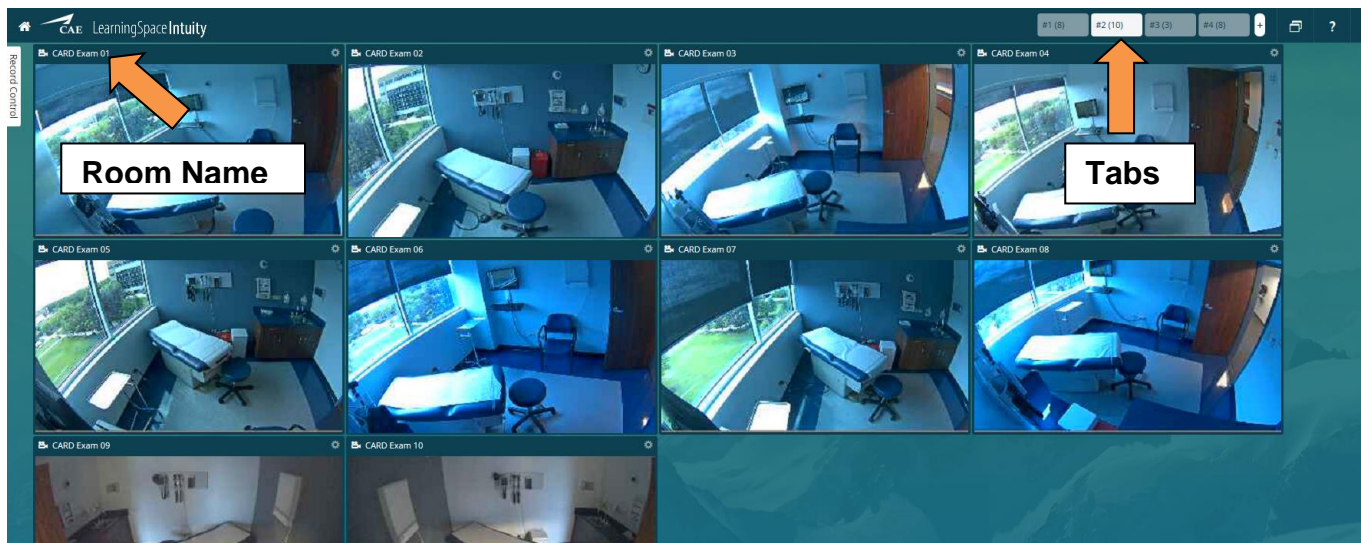
SECTION 3: VIEWING LIVE EVENTS

You will see several icons and a list of current or recent events. The event you will be entering is titled:

To enter live viewing and grading, please click on **RECORDING**.



Upon entering live viewing you will receive the camera feed from all rooms involved in the event. See screen shot below.



Find the room you are assigned and click **ONCE** on the name of the room in the upper left corner of the video feed. Rooms may be located on different tabs. For example: **CARD Exam 01**

Please wait while the screen below loads.

You will not need to click in the Record Control box.

Click the 'Gear' Symbol to:

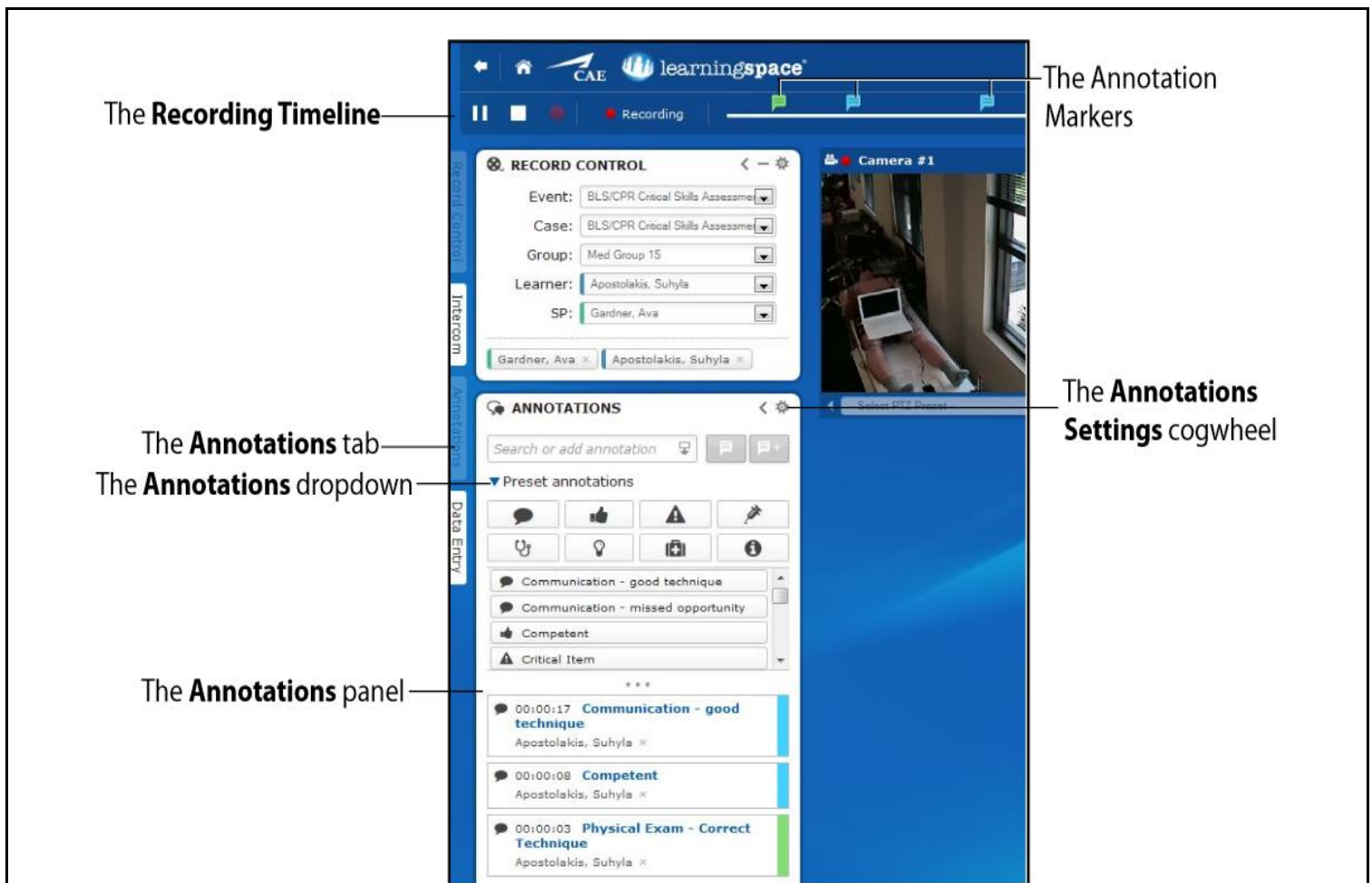
- Turn sound on and off using mic symbol
- Shrink the image using the – symbol.
- Enlarge the image using the + symbol.
- Close a camera view to the bottom tool bar by clicking the X.

The screenshot displays the LearningSpace Intuity interface. On the left, there is a 'RECORD CONTROL' panel with dropdown menus for Activity, Case, Group, Learner, and SP. Below it is an 'ANNOTATIONS' panel with a search bar and various preset annotation icons. The main area shows two camera views: 'CARD Exam 427 Cam A (I08)' and 'CARD Exam 427 Cam B (G16)'. Each camera view has a gear icon for settings and a close button (X). An orange arrow points from the 'RECORD CONTROL' panel to the top navigation bar. Another orange arrow points from the gear icon in the top camera view to the 'Click the 'Gear' Symbol to:' text box. A third orange arrow points from the gear icon in the bottom camera view to the 'Two Camera angles.' text box.

The screenshot shows the top navigation bar of the LearningSpace Intuity interface. It includes a back arrow, a home icon, the CAE logo, and the text 'LearningSpace Intuity'. Below this, there are icons for pause, play, and recording, along with a progress indicator.

Navigation Bar:

- The BACK ARROW will return you to the last page you were at. Do not use the back button on your browser.
- The HOME symbol will return you to your home page.
- There are Pause and Play controls to control the video.
- You can click on the Timeline to fast forward to a certain point in the recording.



The **Recording Timeline**

The **Annotation Markers**

The **Annotations tab**
The **Annotations dropdown**

The **Annotations Settings cogwheel**

The **Annotations panel**

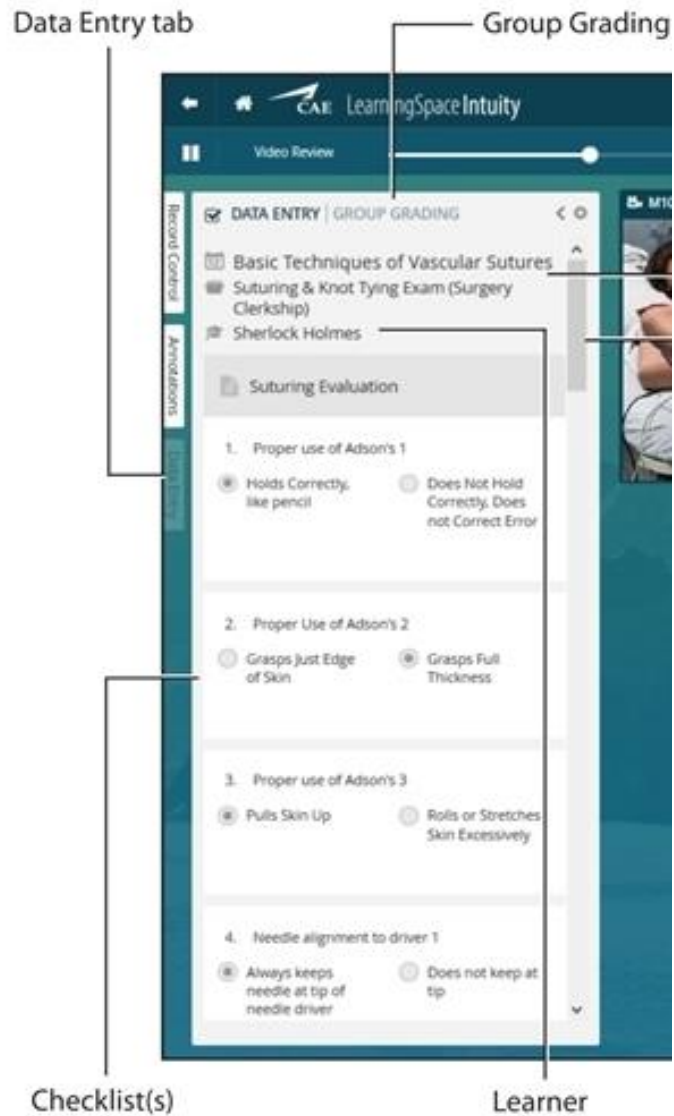
The Annotations and Data Entry Bar:

- Click on the **Annotations** tab to write comments to the student. The Annotations will appear on the Timeline at the top of the page.
- Select the **Data Entry** tab to fill out your **Faculty Checklist**.



Annotations:

- Click on the **Add Annotation** icon to add to the students video.
- Click on the **Save and Add** icon to add your annotation to the students video and save it as a Preset annotation to be used later.



LAST STEPS:

- Please ensure your Bose Headsets are on.
- Please ensure they are plugged into the headset port on the computer.
- Please ensure your computer volume is turned on.
- Since you are only concerned with audio from the room, you do not need to navigate further. This screen will continue to provide audio and video feeds throughout the event.

If you have any difficulty, please ask for assistance.