



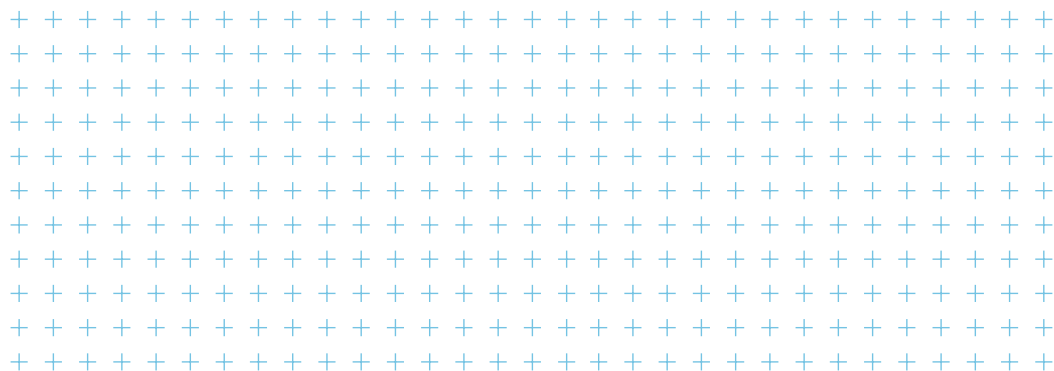
Stewardship Report Fiscal Year 2024

Downers Grove, Illinois

Glendale, Arizona

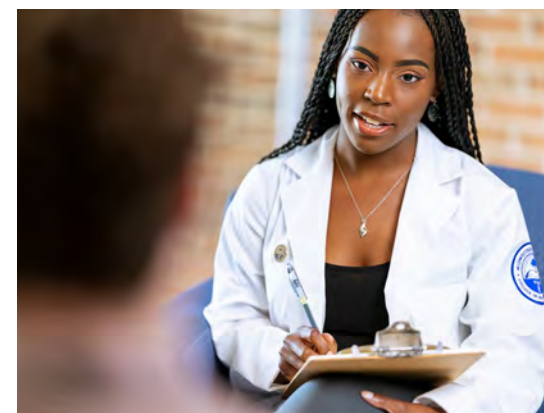
midwestern.edu





Stewardship Report Fiscal Year 2024

A Leadership Transition at Midwestern University.....	3
Microsoft Healthcare Executive Champions Rural Medical Education	4
Walt and Ingrid Wright Share Son's Legacy with Midwestern University Physician Assistant Students.....	6
Arizona Optometric Charitable Foundation Partners with Midwestern University to Support Students and Bolster Arizona Eye Care	8
Grant from Duly Health and Care Charitable Fund Expands Access to Eye Care.....	10
Preceptors Find Joy in Mentoring Future Healthcare Professionals.....	12
Honor Roll of Donors.....	14
Year in Review.....	28





Glendale, Arizona Campus



Downers Grove, Illinois Campus



A Leadership Transition at Northwestern University:

Honoring the Past, Embracing the Future

Alumni/Donors/Partners:

Midwestern University announced May 19, 2025, the retirement of Kathleen H. Goeppinger, Ph.D., as President and Chief Executive Officer. Dr. Goeppinger has been a dedicated leader and visionary force behind the University's remarkable transformation for nearly four decades. Since joining the Board of Trustees in 1985 and assuming the role of President and CEO in 1995, she has led the institution through unprecedented growth in facilities, academic programs, and enrollment. Under her leadership, Midwestern University has expanded from fewer than 900 students to nearly 7,000 across two campuses in Downers Grove, Illinois, and Glendale, Arizona, offering 24 academic programs across 13 colleges.

The University has bestowed the honorary title of President Emeritus on Dr. Goeppinger in recognition of her enduring contributions. Reflecting on her decision to retire, she shared: "I have been blessed to work alongside devoted faculty, staff, students, and trustees who share a passion for health care, community service, and academic excellence. Midwestern University is academically, financially, and culturally strong. I am confident that the next generation of leadership will take us to even greater heights." Janet Bolton, Chairman of the Board of Trustees, offered heartfelt appreciation on behalf of the University: "Dr. Goeppinger's legacy is one of extraordinary growth and unwavering dedication to our mission. Her vision has shaped every aspect of our University—from the expansion of our campuses and programs to the strength of our academic community. Her leadership will remain a cornerstone of Midwestern University."

As we honor Dr. Goeppinger's legacy, we are equally focused on a bold and exciting future. The Board of Trustees has appointed Dr. Joshua Baker as Interim President and Chief Executive Officer, effective May 20, 2025. Dr. Baker brings a deep commitment to Midwestern University's values and a forward-thinking approach to leadership that will guide us into our next chapter.

Midwestern University remains steadfast in its mission to provide exceptional graduate-level education in the health sciences. We are poised for continued innovation and impact—launching new initiatives such as a College of Veterinary Medicine on our Downers Grove campus, expanding clinical and technological capabilities, and deepening our service to the communities we serve.

To our alumni, donors, and friends, your partnership and support have been vital to our journey. As we enter this new era, we invite you to join us in building on our strong foundation. Together, we will embrace the opportunities ahead with purpose, passion, and unity.

As Sun Tzu once said, "Opportunities multiply as they are seized." Guided by the strength of our past and inspired by the promise of our future, Midwestern University is ready to lead.

Microsoft Healthcare Executive Champions Rural Medical Education

James Weinstein, M.S., D.O. (CCOM '77), has been working since the age of 13 and isn't slowing down. His career began at his father's building wire supply warehouse in Chicago, where he learned the value of hard work, persistence, and connecting with people from all walks of life. Today, he's the Senior Vice President of Microsoft Healthcare, leading efforts to transform healthcare delivery through AI-empowered data-driven solutions.

A physician, researcher, executive, and innovator, Dr. Weinstein has made lasting contributions to healthcare. Now, he's giving back to future

physicians by supporting Chicago College of Osteopathic Medicine (CCOM) students with an academic scholarship. The scholarship will aid students from rural communities, with a particular emphasis on those from Hawaii, who wish to improve healthcare access in new care models.

Dr. Weinstein built the foundation for his medical philosophy and career at CCOM, even though his path to medical school was somewhat unconventional. "The Vietnam draft lottery had just started, and I was set to be enlisted. During my physical, they found I had injuries from playing football, so I was deemed unfit for combat. Instead, I was offered a chance to go to officer school or medical school. That's how medical school came onto my radar," he said.

What began as a practical decision soon turned into a passion. "Medical school was the first time I really enjoyed school," he recalls. "I fell in love with the curriculum and the subject matter. It felt like I had found my passion. I guess you could call me a late bloomer, but I feel very fortunate. That's part of why I'm creating this scholarship. I hope it will help others."

Dr. Weinstein remembers a tight-knit class at CCOM, where students forged strong bonds through rigorous classwork and extracurriculars like basketball and tennis. "We spent so much time together in class, studying, and even carpooling to school," he said.

During his clinical rotations at the Chicago Osteopathic Hospital in Hyde Park, he vividly remembers delivering around 25 babies and spending long nights managing critically ill patients. "The responsibility we had as students was profound," he reflected. "Later, I went to Rush (University Medical Center), Chicago, for my orthopedic residency, where I was named Resident of the Year. I felt incredibly well-prepared, thanks to CCOM."

His CCOM relationships reinforced his lifelong commitment to teamwork and collaboration. They also cemented his dedication to treating the whole person, one of the cornerstones of osteopathic medicine. "Osteopathic principles resonate deeply with me," Dr. Weinstein shared. "People often think osteopathic medicine is just about primary care, but it's so much more. It's a whole-body approach to health and wellness. I've done extensive research on the nervous system and the brain as well as NIH-funded national trials. Serving on the Max Planck Board, one of the top neuroscience institutions, helped me further connect my background in osteopathic medicine to broader medical advancements related to the central and peripheral nervous system. Many overlook how profoundly the nervous system influences our overall health and most all disease manifestations. I see this beautiful integration of systems down to the cellular, and molecular, level."

Dr. Weinstein's deep appreciation for the value of connection extends to his personal life, as well.

A pivotal moment for him was meeting his wife, Mimi. "My wife is my best friend. We met at the Shriners Children's Hospital in Chicago. She was a volunteer; I was a resident. We cared for kids with severe conditions—osteogenesis imperfecta, cerebral palsy, Reye syndrome, and many congenital abnormalities, you name it. We've been married for 42 years. Our youngest daughter is a physician/pulmonary intensivist, at Brigham and Women's Hospital in Boston, with two daughters of her own. Life's been good to us."

Despite their many successes, life has had its share of challenges, and their strong partnership was a necessary source of support. "The greatest challenge of my life was losing our firstborn daughter, Brianna, to leukemia. She was diagnosed at just 18 months old and passed away shortly before her 12th birthday after enduring five relapses. Fighting insurance companies and navigating her healthcare was exhausting, but



“Osteopathic principles resonate deeply with me... People often think osteopathic medicine is just about primary care, but it’s so much more. It’s a whole-body approach to health and wellness.”

— James Weinstein, M.S., D.O. (CCOM '77)

nothing compares to the pain of losing her,” he said. “In business, I’ve faced countless challenges, as a physician/surgeon, department chair, Principal Investigator, Institute Director, CEO, or tech executive – they all pale in comparison.”

The loss of their daughter deepened Dr. Weinstein’s commitment to reducing disparities and expanding access to care for underserved communities. His work on the Dartmouth Atlas served to further his commitment to access and equity. After a successful career as a spine surgeon, researcher, and editor of a major journal, he served as the Chief Executive Officer and President of Dartmouth-Hitchcock Health from 2010 to 2017, leading a \$2.5 billion hospital system. “I’m known for my work with the Dartmouth Atlas, studying U.S. healthcare trends for over 30 years, and the NIH-sponsored SPORT study (Spine Outcomes Research Trial). In the Atlas, we analyzed data from every zip code, mapping areas with high spending and poor outcomes. Despite policy changes like the Affordable Care Act, many disparities persist. The U.S. spends nearly \$5 trillion on healthcare, but ranks poorly in most health outcomes.”

During his time at Dartmouth, he worked to transform patient care by championing “informed choice” vs. traditional informed consent. He founded the nation’s first Center for Shared Decision Making and implemented patient-reported outcome measures to ensure patients actively participate in treatment decisions, an approach that remains central to healthcare reform today. He started one of the first telemedicine centers in the U.S. and the first remote monitoring system for patients with chronic disease. This was built on the Microsoft platform and led to his first meeting

with Satya Nadella, CEO of Microsoft. This led to further conversations and eventually joining Microsoft in 2017.

Dr. Weinstein’s research has been pivotal in shaping national health policy discussions. He is a member of the National Academy of Medicine and has served on several presidential committees, including the Special Medical Advisory Group, providing advice on matters relating to the care and treatment of U.S. veterans. Dr. Weinstein has been recognized with numerous awards, has published more than 325 peer-reviewed articles, and co-authored the book “Unraveled: Prescriptions to Repair a Broken Health Care System”.

Now, as a leader at Microsoft, he is pioneering a “hub-and-spoke” model for healthcare infrastructure inspired by the Federal Reserve’s role in banking. His vision of a “Federal Reserve of Health” aims to create a more connected, data-driven healthcare system to enhance efficiency and effectiveness.

“In the 2008 financial crisis, the Federal Reserve’s electronic infrastructure kept banks afloat. That level of coordination doesn’t exist in healthcare, and I believe creating a similar model could have greatly improved our COVID-19 response by saving lives through better data connectivity,” he said. “The hub-and-spoke approach also addresses rural health challenges, where 60 million Americans lack access to essential care like maternity services or specialist consults. Healthcare might not seem like an obvious area for Microsoft, but by positioning ourselves as the digital infrastructure provider, we can help transform how and where care is delivered.”



Dr. Weinstein and his wife, Mimi, have been married for 42 years.

Dr. Weinstein’s commitment to healthcare equity is evident in his own scholarship, leading the first equity publication at the national academy, *Communities in Action: Pathways to Health Equity* - National Academy of Medicine, and in the scholarship he and Mimi have established at CCOM to support students dedicated to similar goals. Looking back on his varied experiences, Dr. Weinstein said, “My journey started at CCOM, where I was just another student. No one expected anything extraordinary from me. I’m still not sure if I’m anything special, but I’ve had a fascinating career and a fantastic family with multiple roads traveled.”

At 74, his curiosity and desire to innovate are as strong as ever. “I’ve pursued additional degrees and worked in diverse fields because of my curiosity. Every problem is solvable, even if not in the way you initially hoped,” he said. His guiding philosophy, rooted in osteopathic principles and a lifetime of overcoming challenges, is perhaps best captured by one of his favorite quotes from Jane Kristen Marczewski: “Don’t you want to see what happens if you don’t give up?”

Walt and Ingrid Wright Share Son's Legacy with Midwestern University Physician Assistant Students

Walt Wright was recounting a story about his late son Brent when he picked up the plush pickle.

The plush toy is not the only pickle-themed item Walt and his wife Ingrid have around their home. But at first, the pickle plush might have seemed out of context in the room where Walt was discussing Brent's childhood – a room filled with Walt's memorabilia from a three-decade career in the United States Air Force, including a large lithograph of an F-16 Viper fighter plane of the type Walt used to wrestle around the skies.

But once you know the etymology of the pickle – specifically, what it means to Walt and Ingrid – it makes total sense. As Walt says, a military man loves nothing more than a good acronym. PICKLE stands for passion, integrity, courage, knowledge, loyalty, and empathy. The fact that Brent loved pickles made the acronym even more appropriate when Walt and Ingrid came up with it. And that is what "PICKLE" is for the Wrights – an acronym that imperfectly but poignantly summarizes so much of what they loved about Brent, and what now motivates them to support the profession Brent chose and the peers he associated with as a student at Midwestern University.

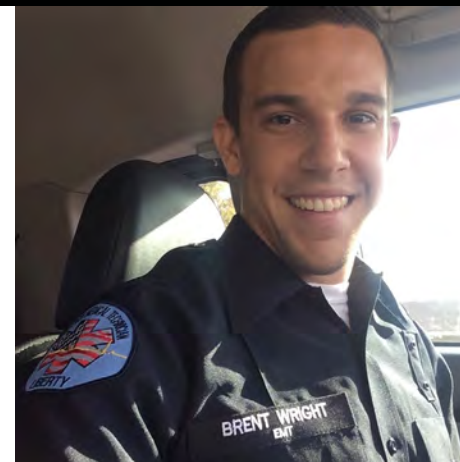
Each year, Walt and Ingrid set aside \$2,500 for the Brent Thomas Wright (BTW) Scholarship, to be awarded to a member of the Physician Assistant Program at Midwestern's Glendale Campus. The scholarship recipient is selected, at the Wrights' behest, by a peer vote – the PA students select the student in their class who most embodies the leadership qualities that Brent exhibited in his daily life.

Brent passed away in 2017 from Ewing sarcoma, a rare, cancerous tumor that forms in bone or soft tissue and is most common in children and young

adults. Brent was diagnosed in July 2014, and yet even in the face of that diagnosis, he decided to pursue his master's degree in Physician Assistant Studies at Midwestern. Not even his cancer treatments would keep him from being a positive influence on his peers. As Ingrid recalls, "He was so excited about becoming a Physician Assistant. He was always helping, he was always volunteering to do things. He volunteered to be the Class Treasurer while he was going through cancer treatments. Here Brent was going through chemo and everything else, and he was just gung-ho helping the class, even helping tutor and mentor struggling students."

Helping and mentoring people came easily to Brent, even early on. Walt remembers that as a Cub Scout, Brent took a fellow Scout, two years his junior and autistic, under his wing during a four-day Scout camp and mentored him – unbidden and on his own initiative. Ingrid shares that when Brent was in the third grade, his teacher came to her and revealed that she had discovered Brent and his best friend Garrett off to one side in the classroom – Brent was helping the dyslexic Garrett learn to read. "Brent was a very intellectual and intelligent young man," Walt says. "But beyond that, he had a passion for people. It was a sort of inborn, deep-seated empathy. It was like he was drawn to people less fortunate than he was."

Brent's impact on his Midwestern peers cannot be overstated. After Brent passed, he posthumously received his Master of Medical Science in Physician Assistant Studies along with his classmates. Accompanying the diploma was a flood of testimonials from his peers, each detailing acts of kindness and leadership large and small that made an impact on them. "Brent's life was all about taking care of others and loving people," says Jeffrey Crosby, PA, the PA



Brent Wright

Class of 2018 President, now working at Phoenix Children's Hospital specializing in hematology and oncology. "He taught us all a lot about how important it is to have a giving, caring spirit and the value found in taking a little time each day to put a smile on someone's face with a kind word or a simple gesture."

Walt and Ingrid have leaned heavily on the Midwestern University community since Brent passed away. The flexibility and love the campus community showed to Brent as he fought his cancer battle while immersed in his studies made a huge impact on the Wright family. "What a world-class organization in the way that Brent and his wife Randi were treated at the time," Walt says. "The respect, the dignity that Midwestern gave them... he had to reluctantly step back out of the program for a couple of months with the promise of getting right back in following his treatment. And the positive hope that that gave him during that fight was incredible. The power of that, and that love and support from Midwestern to them was so crucial."

Even away from campus, the Wrights find connections with Midwestern graduates who either knew Brent or got to know him through them. Ingrid remembers taking a neighbor to get

a shot in her knee a couple of years ago, and when the physician assistant came into the room, Ingrid found out that she was a member of Brent's class. "We both started crying and talking about what a wonderful person Brent was," she remembers.

During a recent hospital stay, Walt asked an attending PA who is a Midwestern alumna whether she knew Brent while she was studying. "She told me she didn't know Brent, but she made a special trip back to my room the next day," he recalls. "She said, 'I asked a couple of classmates about your son and he made a good impression on them.' She didn't have to do that. But that just speaks to the character of Midwestern graduates."

But the "Pickles" – the BTW Scholarship recipients – are Ingrid's and Walt's favorites. They have become like surrogate members of their family. "We try to get the group together each time we add a new 'Pickle,'" Ingrid says. "Obviously, some are out of state now and have moved around, but we still try to get them together in person or online. You look at them and you say, 'Yes, I can see traits of Brent in each and every one of them.' And that's what we wanted. That's why we wanted the peers to select the person after they read Brent's biography."

"We've made an attempt to keep everybody together and try to kind of build a little 'Pickle Network,' if you will," explains Walt. "One of the Pickles this year arranged for a Christmas ornament called the 'BTW Pickler' – it's a little ornament engraved in gold – to send out to everybody. We're trying to maintain and sustain that group. We're very, very close with the first- and second-year recipients who actually had met Brent personally. It's beautiful... and some say, 'Well, we kind of treat you guys like our Arizona grandparents.' They're like our kids."

For the future, Walt and Ingrid have begun the process to endow the BTW Scholarship in perpetuity. It is a way for them and their children to remain part of the Midwestern University family, a way to honor Brent's legacy, and – most importantly – a way for them to help send healthcare professionals who exemplify Brent's passion and desire to help people out into the world. "It is sustaining this dream, you know," Walt says. "The scholarship is not just all about Brent. It's about his classmates, his peers, and those who follow them. It's about hopefully taking a little bit of his legacy and passing it along to the next graduate, and the next graduate, and the next graduate. And that's why we're very, very honored to be a part of it all."



"What a world-class organization in the way that Brent and his wife Randi were treated at the time... The positive hope [the University provided] during that fight was incredible. The power of... love and support from Midwestern to them was so crucial."

— Walt Wright



The "Picklers" at the Wright home in 2024. Walt and Ingrid make a point of keeping close ties with their scholarship recipients and their families.

Arizona Optometric Charitable Foundation Partners with Midwestern University to Support Students and Bolster Eye Care

Since its founding in 2009, Midwestern University's Arizona College of Optometry (AZCOPT) has produced graduates who excel at both clinical skills and community service. As part of their outreach, AZCOPT has partnered with other professional and charitable entities, such as the Arizona Optometric Charitable Foundation (AzOCF), whose support has enriched the College's mission and bolstered its impact on

the profession and the community. The Arizona Optometric Charitable Foundation, established by the Arizona Optometric Association (AZOA), is dedicated to improving access to eye care for underserved populations, providing scholarships, and supporting programs that enhance optometric education and services.

The relationship between AzOCF and AZCOPT began with the late Donald Jarnagin, O.D., AZCOPT's second Dean and a pillar of the optometric community. Recognizing the potential for collaboration, Dr. Jarnagin encouraged the College to approach AzOCF for grants to support critical community programs. "Dr. Jarnagin was a leader in optometry nationally and statewide, as well as the past president of the AZOA and American Optometry Association (AOA). He encouraged the school to reach out to AzOCF for grants to help the single moms get access to eye care at Midwestern through the UMOM New Day Centers in Phoenix," recalls Beth Pyle-Smith, O.D., President of AzOCF.

AzOCF's commitment to AZCOPT increased through its scholarship programs, which honor the legacies of two towering figures in Arizona optometry: Dr. Jarnagin and Dr. Al Levin. "A few years ago, after the passing of Dr. Jarnagin and Dr. Levin, the Foundation decided to offer scholarships in their names to two deserving students," says Dr. Pyle-Smith. "We have since increased the number of these scholarships to have more of an impact on our local optometry students.

"The Dean of the College selects students who are planning on staying in Arizona, who are in

financial need, and who are showing exceptional skills and success in the program," she adds. "This can be viewed as a win-win for the community and the scholarship recipients. It provides people in need who cannot afford eye care the opportunity to be examined by the optometry students at AZCOPT."

The Foundation extends its influence beyond scholarships by actively involving AZCOPT students in its charitable initiatives, fostering a spirit of service that aligns with Midwestern University's core values. Opportunities include mentorship programs, volunteering, and participation in community events such as the Foundation for Blind Children's Stride for Sight 5K Race.

"AZCOPT students can help the Foundation grow by donating time to help with providing vision services to the underserved. We do have some charities that need doctors to provide eye exams, as well as various events and fundraisers," explains Dr. Pyle-Smith.

AzOCF's initiatives also benefit from the clinical training provided at Midwestern's Eye Institute, where students gain hands-on experience serving diverse patient populations. "The more patients the students are able to help, the better their clinical skills will become, preparing them to excel after graduation," notes Dr. Pyle-Smith.

The Foundation's grants support programs such as the Mission of Mercy in Mesa, the Foundation for Blind Children, and the Health Safari Van, all of which align with AZCOPT's mission to deliver compassionate, high-quality care.



The late Dr. Donald Jarnagin, AZCOPT's second Dean and a pillar of the optometric community.

“The Dean of the College selects students who are planning on staying in Arizona, who are in financial need, and who are showing exceptional skills and success in the program,” she adds. “This can be viewed as a win-win for the community and the scholarship recipients. It provides people in need who cannot afford eye care the opportunity to be examined by the optometry students at AZCOPT.”

Dr. Beth Pyle-Smith,
President of AzOCF

As AZCOPT and AzOCF continue their collaboration, new initiatives are on the horizon. In the coming year, AzOCF will introduce additional scholarships for students who plan to stay in Arizona and need financial assistance. “We have added a couple more scholarships for Midwestern optometry students this coming year for those who will be staying local to practice after graduation. Every dollar helps in the morale of the students,” says Dr. Pyle-Smith.

The Foundation’s partnership with AZCOPT shows the efficacy and power of aligned missions. Through their partnership, AzOCF and AZCOPT are collaborating to build a stronger support system for the next generation of optometrists as well as the state of eye care in Arizona.



Grant from Duly Health and Care Charitable Fund Expands Access to Eye Care in Illinois

Vision problems, when left untreated, can profoundly affect a person's quality of life, leading to difficulty reading, working, or even safely navigating daily tasks. Yet, for those without insurance or financial resources, routine eye care and necessary treatments can be difficult to access.

That's where the Duly Health and Care Charitable Fund Grant comes into focus. Since 2019, Duly Health and Care has

provided an annual \$5,000 grant to Northwestern University's Eye Institute in Downers Grove, Illinois. The grant is designed to make vital vision care and treatment affordable for individuals who demonstrate financial need or lack insurance coverage.

"The Charitable Fund at Duly is dedicated to improving vision health for community members who may lack the financial means to access necessary care. We believe that clear vision is not

only essential for overall health but also crucial for success in education, employment, and daily life. Unfortunately, many individuals face significant barriers to obtaining vision care, and untreated vision problems can lead to avoidable complications that impact their ability to thrive. By investing in vision health, we reaffirm our commitment to ensuring that everyone, regardless of income, has the opportunity to receive the care they need to live healthy, fulfilling, and productive lives," said Dustin Wilson, Duly Charitable Fund Manager.

Access to timely vision care can be the difference between thriving at work or falling behind, between independence and relying on others.

In some cases, prompt care can even help prevent serious medical complications, including permanent vision loss. "The Duly grant allows us to expand care to an additional 40 to 50 patients each year," said Jenelle Mallios, O.D., FAAO, Associate Dean, Chicago College of Optometry. "In addition to the University's Patient Financial Assistance Program, which primarily covers exams, this grant offers flexibility. It helps us fund essential diagnostic testing and follow-up services that other financial aid might not cover."

The Eye Institute provides care for both routine and complex eye conditions such as glaucoma, diabetic eye disease, and macular degeneration. "Many individuals we serve as part of the grant delay eye care due to financial challenges, which can have serious consequences," said Allison Foster, M.B.A., Clinic Manager for the Eye Institute. Dr. Mallios added, "We see several patients with diabetes or who are pre-diabetic, and diabetic retinopathy is the leading cause of blindness in the U.S. These patients often need additional appointments or testing that the grant can help cover." She also highlighted the connection



One Health perspective, vision care is about far more than clear sight. We can detect conditions like diabetes, autoimmune diseases, and heart disease, and refer patients to specialists. The retina is the only place in the body where we can see veins and arteries without surgery, offering critical insights into vascular health,” she added.

Through its ongoing support, Duly Health and Care has shown its confidence in the care and services offered by the Eye Institute. “This partnership aligns with our mission and vision for community health by fostering a healthier, more equitable community through improved access to essential services. Duly is dedicated to transforming health and care and ensuring all individuals can achieve their best health, regardless of socioeconomic barriers. This collaboration underscores Duly’s values of compassion, innovation, and advocacy for the well-being of the communities it serves,” Mr. Wilson said.

The patients served by this grant are recommended and screened by community partners to identify those who qualify for services. These patients receive full ocular health assessments, including visual acuity tests, refraction, pressure checks, and dilated eye exams. For those in need, corrective lenses, single-vision, or bifocal glasses can be provided. “Our clinic is a high-quality, beautifully maintained facility where every patient, regardless of financial need, receives the same respectful care,” Dr. Mallios explained.

The grant’s impact extends far beyond providing essential vision care to community members. It also helps strengthen the Eye Institute’s core mission to educate future optometrists. By increasing the patient pool, the Eye Institute is able to provide its students with a broader range of real-world cases, enhancing their diagnostic skills and clinical expertise.

“Duly supports the education of future healthcare professionals because they are the foundation of a healthier future. By investing in their development, we are ensuring that communities will have access to skilled, compassionate caregivers/providers who can meet evolving healthcare needs,” Mr. Wilson said. “Supporting



students aligns with our mission to advance health and well-being by fostering a sustainable pipeline of professionals who share our commitment to excellence, innovation, and equity in care. Empowering students with the knowledge and resources they need to succeed ensures that the next generation is prepared to make a meaningful impact in healthcare and in the lives of those they serve.”

The Duly Health and Care grant has already made a difference in the lives of more than 200 patients who might otherwise go without critical vision services. One patient shared, “My sincerest thank you to the MWU Eye Institute and Duly Charitable Fund. I can now see since I was provided glasses at my visit. I had never realized how badly I needed glasses until I went for my diabetic eye exam. I am truly grateful.” Another patient noted, “I was very

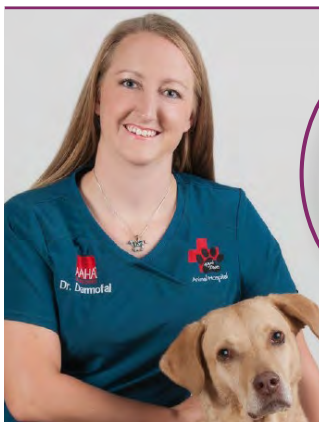
concerned because I believed I was going blind. The MWU Eye Institute helped me regain peace of mind. I had an outdated prescription which was causing me issues and possibly contributing to migraines. I am very happy and grateful.”

Looking ahead, this partnership has the potential to grow even stronger by expanding programs, introducing innovative solutions, or targeting new areas of need. “The work accomplished through the grants so far has been incredibly impactful, reflecting the shared commitment to improving community health and addressing critical needs,” Mr. Wilson added. “It’s inspiring to see how the grant has enabled tangible changes, such as increasing access to care, raising awareness, or providing essential resources to underserved populations.”

Preceptors Find Joy in Mentoring Future Healthcare Professionals

As mentors for the next generation of healthcare professionals, the role of Midwestern University preceptors is extremely significant, and we are so grateful for their important contributions.

We asked several of our current preceptors why this role is so important to them.



**Jess Darmofal, D.V.M.,
College of
Veterinary Medicine,
Class of 2018**

Current employment:

Junior Partner and Medical Director
at 43rd Avenue Animal Hospital

*"Midwestern University students
always come in with the utmost
level of professionalism and
willingness to learn. They have a
good knowledge base, which allows
them to apply their knowledge to
real-world clinical scenarios."*

Current employment:

Internal Medicine Associate Program
Director, Abrazo Healthcare

Academic Hospitalist, Honor Health
Mountain Vista

*"Being a preceptor is my way of
giving back to the profession I love.
Students are the future of medicine
and, therefore, they are part of my
legacy. I hope that we can foster
our students to become intelligent
physicians who are also kind
humans at the bedside."*



**Leslie Easley, D.O.,
FACOI,
Arizona College
of Osteopathic
Medicine,
Class of 2007**



**James Siegert, D.O.,
Chicago College
of Osteopathic
Medicine,
Class of 2010**

Current employment:

Board-Certified Urologist; Urology Program Director,
Faculty Member at Specialty Physicians of Illinois,
Franciscan Health Olympia Fields

*"I gave a lecture at Midwestern about two years ago
to the third-year students during their core surgical
rotation. The lecture was about what urology is and
provided a general overview of the profession. I left
my email up and mentioned, 'If anybody has any
questions about urology as a career, feel free to reach
out.' I received an email from a third-year student,
who said, 'I'm going into internal medicine. I want to
be a cardiologist, but after attending your lecture,
urology seems interesting. Would it be okay if we
connected so I can learn more?' That chance lecture
and our subsequent meeting led me to introduce
her to urology and invite her to rotate with us. I wrote
her a letter of recommendation, and she ended up
changing her career path. She decided to pursue
urology, and she's now our current first-year resident."*

Current employment:

Clinical Pharmacist Lead,
Northwestern Medicine

Pharmacist Lead, Ambulatory
Surgery & Clinical Pharmacist,
Surgery & Procedures

Site Leader, DEA National Take
Back Day: Northwestern Memorial
Hospital

Assistant Professor of Orthopaedic
Surgery at Northwestern Medicine



**Sterling Elliott,
Pharm.D.,
College of Pharmacy,
Downers Grove,
Class of 2007**

"What I've seen from the Midwestern students who I've had a chance to precept is many of them are willing to embrace the idea of finding new ways forward and come in ready to apply that information in a pragmatic sense. I have to imagine that that's a product of how they've been taught going into this."

**David Meyer,
D.M.D.,
College of
Dental Medicine
Class of 2017**



Current employment:

Clinical Director, River People Health Center

"A major benefit of working with students and partnering with universities is it allows you to stay relevant with the most recent oral health trends, move with the trends almost as fast as the universities do, and stay connected with relevant people in the dental field."

**Christina Hanson,
M.O.T., OTR/L,
College of
Health Sciences,
Occupational
Therapy Program,
Class of 2004**

Current employment:

Rehab Services Education Coordinator,
Northwestern Medicine Marianjoy
Rehabilitation Hospital

"Class lectures and labs build the foundation for understanding Occupational Therapy, but it was my clinical rotations that brought those concepts to life. Now, as a preceptor, I get to share my experiences, help students navigate the complexities of inpatient rehabilitation care, and hopefully help them make their own connections to integrate theory to practice. Students often bring fresh eyes and ideas to patient care, which challenges me to stay current with evidence-based practices."

Become a MWU Preceptor

All Midwestern preceptors receive access to any of the subscription-based resources paid for by the Midwestern University Library. **Some of these subscriptions include:**

- DynaMed
- Isabel
- UpToDate
- Additional journal articles
- Drug monographs
- Major medical databases
- Teaching Physician journal

In addition, all preceptors receive:

- Use of the library at both the Downers Grove, IL and Glendale, AZ campuses
- Reference help while librarians are on duty
- Access to computer resources and electronic databases within the library
- Eligibility to apply for an adjunct faculty rank with Midwestern University
- Access to Continuing Medical Education credit

For preceptors who are not associated with a larger research hospital or university, the free access to these subscriptions is an invaluable resource. Not only will this information and literature help preceptors with their own interests and careers, but it will also serve as supplementary information they can use to better guide Midwestern University students as they grow into licensed, confident practitioners.

There are also program-specific benefits and annual site visits included for preceptors, depending on their college/program affiliation. All preceptors, no matter where they are located, are offered continued support for difficult or challenging situations if needed.

Preceptors have a unique chance to contribute to students' education, pass on their own knowledge, and be a part of the advancement of the profession by educating the next generation of healthcare workers – and that is the most valuable benefit of all.

For information contact alumni@midwestern.edu

In this section:

2024 Annual Honor Roll of Donors

Listed in this section are all contributions to **Midwestern University and its colleges at the Downers Grove, Illinois and Glendale, Arizona campuses from January 1, 2024 to December 31, 2024**

The academic community of Midwestern University has been fortunate to have many donors and supporters whose financial contributions have made a significant impact on our students and faculty, our campuses, and our degree programs. Each year, we recognize and thank our valued benefactors by listing them in our Honor Roll of Donors. All members of our annual giving societies are listed, as well as members of the lifetime giving societies. Our financial strength is enhanced by the annual gifts they provide in needed unrestricted and program-designated funds, as well as lifetime gifts that demonstrate the long-time support of so many special people.

The philanthropic spirit of the dedicated alumni, friends, corporate, and foundation partners in these giving societies reflects their investment and commitment in a bright future for MWU. Your unrestricted gift allows Midwestern University the flexibility to use the funds where the need or potential return is the greatest for our students and the life of the University. Whether your motivation is seeking to advance your specialty; memorializing a colleague, professor, mentor, or loved one; or supporting a program that strikes a chord within you, your contribution to MWU is a means of strengthening the future of healthcare. We thank you for your continued support.

Financial Summary for Fiscal Years Ending June 30, 2024, 2023, 2022

Operating Revenues

(in thousands)	2024	2023	2022
Tuition and Fees	450,766	452,076	445,003
Grant Revenues	5,210	4,147	9,171
Campus-Based Revenue	5,335	5,406	5,345
Contributions	2,222	3,919	10,240
Investment Income	73,780	41,019	(18,003)
Clinic Revenue	27,910	29,017	29,283
Other	5,515	4,253	3,954
Total Revenue	\$570,738	\$540,019	\$485,224

Other Financial Indicators (in thousands)

Cash and Investments	2024: \$1,214,037
	2023: \$1,127,594
	2022: \$1,004,617
Land, Buildings, and Equipment (net)	2024: \$794,613
	2023: \$742,450
	2022: \$735,383
Net Assets	2024: \$1,827,345
	2023: \$1,675,742
	2022: \$1,538,236

If you would like more information about making a donation to Midwestern University, please contact the Office of Development & Alumni Relations at:

800-962-3053

development@midwestern.edu

19555 North 59th Avenue
Glendale, AZ 85308

555 31st Street
Downers Grove, IL 60515

INDIVIDUAL GIVING SOCIETIES

LITTLEJOHN SOCIETY LIFETIME GIFTS OF \$100,000 AND ABOVE

Marion and Bob Aury
Howard B. Babcock, D.O. '76†
Rebecca Caleel
Herman Chanen†
Mark A. Dobbertien, D.O. '87, and
Lisa A. Dynan-Dobbertien, D.O. '88
Gregory J. Gaus
Louis Gierke, D.O. '57, and
Nicole Gierke
Kathleen H. Goeppinger, Ph.D.
Robert M. Goldman, D.O. '85
Anil Gulati, M.D., Ph.D.
Lawrence U. Haspel, D.O. '67
Don L. Hollandsworth, D.O., FACOI
George D. Hubacher, Jr.
Betty A. Iura†
Jeffrey L. Jensen, D.P.M., and
Cecelia Jensen
Jerald and Charlotte Johnson
Karen D. Johnson, Ph.D.
John N. Kasimos, D.O., M.S., M.S.H.C.E.
'84, and Helen Papadakis-Kasimos
Howard S. Kessler, D.O. '72, and
Karen Kessler
Mary W.L. Lee, Pharm.D., BCPS, FCCP
Joseph M. Matheu, D.O. '69†, and
Virginia Matheu†
Gregory Z. Mavian, D.O. '80
Barbara L. McCloud, J.D., M.B.A.
The Osborn Family
Virginia Reter
Devinder Singh, M.D., and
Randeep Singh
The Stanley Stern Trust
Daniel E. Sullivan, D.O. '74
Pui L. Tsang, D.O. '60, and
Audrey Tsang
David and Twila Woods

THE PRESIDENT'S SOCIETY LIFETIME GIFTS OF \$25,000 TO \$99,999

Dennis C. Abella, D.O. '80
Paul J. Allegretti, D.O. '93, and
Denise T. Ibrahim Allegretti, D.O. '97
Mark and Susan Aurit
Patricia Ayers
Dr. Walter and Mrs. Julie Balek
Rotchford L. Barker
Berlin Family
Michael J. Blend, Ph.D., D.O. '79, and
Lesly C. Blend
Robert J. Blok, D.O. '69
Douglas Bobb, D.O. '79
Joseph P. Bonanno, D.O. '64
Thomas A. Boyle, D.O., M.B.A.,
FACOE, FACEP
David B. Braunstein, D.O. '73, and
Sara G. Braunstein, D.O. '74
Edward J. Brophy Jr., D.O. '76, and
Ingrid Brophy
Jan Burdick, Pharm.D., Ph.D. '05
Shari Burns, CRNA, Ed.D.
John G. Bush, D.O. '75
Terry W. Bushnell, D.O. '84
Chester J. Buziak, D.O. '60, and
Maria Buziak
Richard T. Caleel, D.O. '61
Robert J. Carow, Ph.D.
Sharon K.J. Cathcart, D.O. '84, and
Ken Cathcart
Steve Chervenak
Robert P. Cincala, D.O. '69
Marc P. Cohn, D.D.S.
Jerilyn and William Cowen
Om P. Dhingra, RPh, Ph.D., and
Kanan Dhingra
Nicholas M. DiFilippo, D.O. '74, and
Margaret DiFilippo
Aeja Dik
Mark E. Efrusy, D.O. '70†
Mitchell R. Emerson, Ph.D., and
Tara Emerson

Anthony G. Fabaz, D.O. '74, and
Candy Fabaz
M. Bruce Farkas, D.O.
Nancy F. Fjortoft, Ph.D.
Alysha D. Fluno, Pharm.D., '99, and
Brian R. Fluno
Claude Foreit, D.O. '59†
Gary N. Friedlander, D.P.M., FACFAS,
and Patricia Friedlander, RD
Russell O. Gilpatrick, D.D.S., B.A., and
Donna Gilpatrick
V.S. Gilreath, D.O.
Ronald D. Giordan, D.D.S., and
Ileana Giordan
John W. Gobel, D.O. '72
Charles B. Goss, D.O. '70, and
Linda Goss
Thomas H. Grant, D.O. '70
Stephen I. Greenstein, D.O.
Eileen Gretkierewicz
Anthony M. Grimaldi, D.O., FACOS '71
Harold J. Haering, D.M.D., and
Yazmin Haering
Christine Halket, D.D.S., M.S.
Karl E. Harnish, D.O. '83
Gary F. Haverty, D.O. '70
Donald D. Higgins Jr., D.O. '85, and
Patricia A. Higgins, D.O. '87
Mrs. Lon A. Hoover
Sharon Jarnagin
Charles E. Jessup, D.O. '64
Deanah A. Jibril, D.O. '93, and
Kevin J. Barnes
James R. Johnson, D.O. '78
H. Alan Jones, D.O. '78
Drs. Maninder and Ramit Kahlon
John J. Karrat, D.O. '68†
Michael A. Keer, D.O. '76, and
Nadine E. Keer, D.O. '76
David and Nancy Keller
Lori Kemper, D.O., and David Kemper
Dr. Gordi and Mrs. Balwender Khera
Edward J. Kinkopf, D.O. '79, and
Gaye Russell Kinkopf
Ross J. Kosinski, Ph.D., and
Mary Kosinski

Joseph S. Kozlowski, D.O. '76
Richard J. Krejsa, D.O. '76† and
Gloria Krejsa
David Kuo, D.O. '80, and Brenda Kuo
Paul Kwok, D.O. '81
Marilyn Latus
Arthur R. Levine, D.O. '65
Madeline R. Lewis, D.O. '86, and
Mark G. Lewis, D.O. '83
Robert L. Litchfield, D.O. '75†
Jean A. Loludice, D.O. '72
P. Robert Lombardo, D.O. '52
Catherine A. Macyko, M.D.
Ella J. Marsh, D.O. '71
Paul A. Martin, D.O. '77, and
Teresa K. Martin
Marc Mayer, D.O. '83
Dennis J. McCallian, Pharm.D., and
Linda McCallian
William K. McCarty, D.O. '73
Joyce A. McDonald, D.O. '83, and
Kenneth P. Tarr, D.O. '83
Michael and Martha Meyers
Rudolph Moise, D.O. '81
E. Donald Morando
Marian P. O'Brien, M.S.
Michael R. Olden, D.O. '72
James Pashayan, D.D.S., M.A.Ed.
Scott Perkins, M.D.
Dorothy Perrotta
Frank L. Piaskowy, D.O. '77
Kathleen N. Player, Ed.D., M.S.N.,
M.B.A., M.S.C., and Ken W. Player
Kyle H. Ramsey, Ph.D., and
Kathleen P. O'Hagan, Ph.D.
Edward O. Riley, D.O. '64
Fred D. Romano, Ph.D., M.S.
Howard J. Rose, D.O. '70
Robert S. Rosenberg, D.O.
Shenin M. Sachedina, D.O. '90, and
Aziz Jasani
Philip and Judith Sbarbaro
Kerry G. Schlecht, M.D.
Alvin J. Schonfeld, D.O. '72

Donald J. Sefcik, D.O., M.B.A.,
FACOE '85
Michael D. Settecase, D.O. '80
F.B. Shannon, D.O. '80
Mahmood I. Siddique, D.O. '91, and
Reshmi Siddique, Ph.D.
Nancy F. Sloan
C.R. Smith, D.O.
Jacquelyn M. Smith, Ph.D.
Kermit C. Smith, D.O., M.P.H. '66, and
Mary E. Larson Smith
Louis Sommerhalter, D.D.S., and
Judy Sommerhalter
F. Robert Suchyta, D.O. '73
Pamela Jurgens-Toepke, D.D.S., M.A.,
and Timothy R.S. Toepke, D.D.S.
Robert J. Tomchuck, D.O. '70
Marie Vanator
James N. Weinstein, D.O. '77, and
Miriam Weinstein, D.C.
Larry J. Wells, D.O. '77
Mark D. Westfall, D.O. '87, and
Jean Westfall
Colonel Walter Wright, USAF, Retired,
and Mrs. Ingrid Wright
Yir Gloria Yueh, Ph.D.

MIDWESTERN UNIVERSITY SOCIETY | LIFETIME GIFTS OF \$10,000 TO \$24,999

Iqbal I. Atcha, M.B.A., RPh. '99, and
Amy Atcha
Andrew A. Athens, D.O. '81
Gregory C. Baggerly, D.O. '77
Joshua C. Baker, M.S., O.D., and
Megan Baker, O.D.
Reginald M. Ballantyne, III
William J. Baylis, D.O., FAOAO '88, and
Patricia L. Baylis, B.A., PA-C
Barry W. Berger, D.O. '80
Karen L. Berrigan, D.M.D.
James M. Blackwood, Pharm.D. '05
Shiela K. Blackwood
John E. Blanzly, D.O. '60
Michael M. Bond, D.O. '97
William A. Brachvogel, D.D.S.

† Deceased

Phyllis Brickner	Sorrel E. Fagel	Liisa L. Laakso, D.O. '77	Anthony L. Mulloy, D.O. '84, and Laura Lyngby Mulloy, D.O. '84	Edward T. Schirack, D.O. '79
Larry C. Brookshire	Richard A. Feely, D.O.	John Ladowicz, M.B.A., and Kathy Ladowicz	Cathy L. Munro, D.O. '83, and Steven L. Burandt, D.O.	Gregory M. Schuster, D.D.S.
Russell W. Brown, D.O. '76	Marie R. Fleury, D.O., M.B.A., FACOI, FACOE'P '93, and Rick Fleury	Robert M. Landsdorf, D.O. '67	Sabita Nandy, M.Sc., Ed.S., LMFT	Xiangrong Shao, M.D., and Saeeduddin Khan, M.D.
Stanley P. Brysacz, D.O. '71, and Dorcas A. Brysacz	Claude A. Foreit, D.O., M.H.A. '88	George J. Leach, D.O. '71	Michael A. Nicholas, D.O.	Robert G. Shimmel, D.O. '55
George Burgett, J.D.	Theresa W. Fossum, D.V.M., M.S., Ph.D., DACVS, and Matthew W. Miller, D.V.M., M.S.	Thomas Lenton, Pharm.D. '06	Karen Nichols, D.O., M.A., MACOI, CS, and James Nichols	Barton G. Sickinger, D.O. '80
Kathryn R. Burke, D.O. '86	Roger L. Frazier, D.O. '59	James E. Link	Lawrence J. Nowinski, D.O. '66	B. Warren Smith, D.O. '64
Martin C. Burke, D.O. '89	Frederick G. Freitag, D.O. '79	Dale E. Loeffler, D.O. '79	Michael S. O'Connor, D.O. '84	Brad Smith, D.D.S.
Richard E. Bush Jr., D.O. '67, and Barbara Bush	Marvelyn Gadowski	David Lustig, D.O. '65	Gregory O'Coyne, CPA, and Jenny Schultz	Stephen J. Sokalski, D.O. '69, and Anda F. Sokalski
Mary Jo Byrd	David C. Garretson, D.O. '82	Michael J. Lynch, D.O. '81	Ted and Ruth Ogden	Eric. R. Sover, D.O. '83, and Maryellen Sover
George Sarkis Caleel, D.O. '05	Anton G. Giger, D.O. '77	M.A.J. Lex MacNeil, D.D.S.	Jerry P. Oliaro, D.O. '85	Mary J. Stanaszek
William M. Campbell, D.O. '68	Bernadette B. Gniadecki, D.O. '85	Colin A. MacPherson, M.A., CCC-SLP	James O'Neil, M.D.	Michael P. Stanich, D.O. '78
Dennis W. Cappitelli, D.O. '71, and Lana Cappitelli	Scott A. Goeller, D.O. '78	Dean Malone	David Owens and Judith Larson Owens	Mark D. Strauss, D.O. '78
Perry G. Carlos, D.O. '74	Michael S. Goldman, D.O. '67	John D. Marshall, M.D.	Kenneth W. Park, D.O. '71	Eileen Suarez
Erik P. Carroll, MPM, B.S.T.M, ITIL, and Aileen Carroll	Jonathan A. Goldner, D.O., FCCP, FCCM '83, and Lisa Goldner	Rebecca M. Martin, D.O. '81	Robert L. Parsons, D.O. '75	Theodore J. Suchy, D.O. '81
William G. Cataldi, D.O. '67, and Barbara A. Cataldi	Donald J. Hayosh, D.O. '74	Angela Marty, M.A., PHR	Michael A. Pasquarella, D.O. '84	Neil P. Superfon, D.O. '64
Terrence J. Cherwin, D.O. '81	Carter B. Hedeem, D.O. '69	Frank Matheu, D.O. '75	Himadri M. Patel, D.O. '95	Brad L. Suprenant, D.O. '84
Mae J. Ciancio, Ph.D.	Patrick W. Hogan, D.O. '03	Philip R. Matthews, D.O. '77	Lynn R. Patton, M.S., RPh, BCNSP	Michael J. Sutton, D.O. '78
Stan Covington, D.D.S., and Jill Covington	Bruce D. Horton, D.O. '66, and Pamela Rose Horton	Theresa M. Matzura, D.O., FACC, FACOI	Dennis J. Paulson, Ph.D.	Matthew Sweeney, CPA
Paul Cullis, M.D., and Anne H. Cullis	Joseph T. Imbesi, D.O. '69	Mitchell F. Mayer, D.O. '85	Paul J. Pierron, D.O. '81	Gerald R. Swiacki, D.O. '69
Mark Cummings, Ph.D.	Sandra Inouye, Ph.D.	Kevin McCormick and Shannon R. McCormick, M.M.S., PA-C '97	Hal S. Pineless, D.O. '81, and Edy Rudnick Pineless	Guy R. Syvertsen, D.O. '76
Stanley B. Czajkowski III, D.O. '00	Alexander Irvine	Mark E. McKeigue, D.O. '77	Michael S. Pizzato, D.O. '84	Thomas J. Szwed, D.O. '62, and Maryellen Szwed
Gerard M. Davidson, D.O. '80	W. Lee Irving, D.O. '73	Thomas W. McNamara, D.O. '84	Linda S. Popoff	Stephen Szynal, D.O. '83
David and Joanna Delman	Donald Jablonski, D.O. '80	Richard A. Meeuwenberg, D.O. '73	M. Jay Porcelli, D.O., M.H.P.E., Ph.D., FACOF, dist. '78, and Marie Porcelli	Shawn Tennant, Pharm.D., M.B.A., and Cory Tennant
David A. Denka, D.O. '85	Richard P. Jennings, D.O. '82	Bhagvanji M. Meghpara, D.O. '94, and Meenaxi B. Meghpara, Pharm.D. '02	Angela Poulos	Katherine M. Thomas, D.O. '77
Steven M. Diamond, D.O. '70	Oneta Jensen	Kennedy W. Meritt, D.D.S.	Tom Poulos	William C. Thompson II, D.O. '80
Robert H. Dickason, D.O. '75	Howard Johnson	Saveria Michels	Brian Purdy, CPA	Lawrence J. Usher, D.O. '65
Michael A. Dietrich, Pharm.D., and Michelle Dietrich	Dr. Norma Kafer and Mr. James Hugh Gordon	Albert F. Milford III, D.O. '72	Mohammed A. Rahman	Cary F. Vastola, D.O. '79, and Nancy Vastola
Teresa Dombrowski Niiro, Ph.D., and George K. Niiro, Ph.D.	John P. Kalamaris, D.O. '77, and Marilyn Kalamaris	Renate Miller	Kenneth J. Ramsey, D.O. '80	Melanie A. Violand, D.P.M., FACFAS, FAPWH
Norman S. Don, Ph.D.	Marti Kasovac	Glenn J. Milos, D.O., J.D., M.B.A., M.P.H., CPE '98	Joe and Nives Rizza	George W. Vogelgesang, D.O. '68, and Jill Vogelgesang
Paul J. Donovan, D.O., FACEP '83	Gary E. Kolb, D.O. '75	The Barbara Mitchell Trust	Jacki Rocke	James K. Vogler, D.O. '75, and Tina Vogler
Kathleen J. Drinan, D.O., FACC, FACOI '82	Paula Kourian	Harry A. Moffitt, D.O. '73	Paul K. Rosenberg, D.O. '79	Ronald L. Walsh, D.O. '77
Scott M. Elrod	Martin Kovachevich, D.O. '76	Donald W. Morando, D.O. '82	James Richard Roush, Ph.D., PT	Larry N. Williams, D.D.S., M.P.H.
William Elza, D.M.D.	Marie E. Kowalsky	Michael G. and Linda C. Morris	Eileen P. Ryan, D.O. '84	Bruce A. Wineman, D.O. '72, and Catherine Wineman
Robert L. Eubanks, D.O. '75, and Theresa M. Eubanks, D.O. '77	Anthony P. Kozma, D.O. '64	Thomas F. Morris	Lawrence K. Sands, D.O. '81	David G. Witte
	Stephen G. Krates, D.O. '81	Jay Morrow, D.D.S.	Perminder Sanghera, M.D., and Hitpreet Sanghera, M.D.	
	I. Martin Kraus, D.O. '70, and Marcia B. Kraus	Donald and Judith Mosteller	Robert B. Sauter, D.O. '61	

Amy Woodbeck, M.Ed., and
Ron Woodbeck, RPh†
James Woods, Ph.D., and Sue Woods
Dennis F. Wyatt, D.O. '79
Lewin Wyatt Jr., D.O. '78† and
Lillie Wyatt
Barbara Wysocki
Phillip C. Zinni III, D.O. '88, and
Gaye Zinni

ANNUAL GIVING SOCIETIES

MILLENNIUM SOCIETY ANNUAL GIFTS OF \$1,000 AND ABOVE

CHICAGO COLLEGE OF OSTEOPATHIC MEDICINE

CLASS OF 1964

Edward O. Riley, D.O.
B. Warren Smith, D.O.
Neil P. Superfon, D.O.

CLASS OF 1965

David Lustig, D.O.

CLASS OF 1966

Kermit C. Smith, D.O., M.P.H., and
Mary E. Larson Smith#

CLASS OF 1968

William M. Campbell, D.O.#

CLASS OF 1969

Nathan Freed, D.O.
Carter B. Hedeem, D.O.#
Joseph T. Imbesi, D.O., FACOEP#
Stephen J. Sokalski, D.O., and
Anda F. Sokalski#

Gerald R. Swiacki, D.O.

CLASS OF 1970

Steven M. Diamond, D.O.#
Gary F. Haverty, D.O.#
John B. Nori, D.O.

CLASS OF 1971

Richard A. Herbert, D.O.

CLASS OF 1972

James E. Congdon, D.O.
John W. Gobel, D.O.
Ulf R. Hierlwimmer, D.O.#
Howard S. Kessler, D.O., and
Karen Kessler
Jean A. Loludice, D.O.

CLASS OF 1973

Richard A. Meeuwenberg, D.O.

CLASS OF 1974

Perry G. Carlos, D.O.
Anthony G. Fabaz, D.O., and
Candy Fabaz#
Michael E. Hagan, D.O.

CLASS OF 1975

Anthony P. Bertin, D.O.
John G. Bush, D.O.#
Gregory P. Daly Jr., D.O.
Frederick D. Jenkin, D.O.
Robert L. Parsons, D.O.

CLASS OF 1976

Howard B. Babcock, D.O.†
Edward J. Brophy Jr., D.O., and
Ingrid Brophy#

Russell W. Brown, D.O.#
Michael A. Keer, D.O.#

Nadine E. Keer, D.O.#

Richard J. Krejsa, D.O.†, and
Gloria Krejsa

CLASS OF 1977

Anton G. Giger, D.O.#
John M. Lehman, D.O.
Mark E. McKeigue, D.O.
Karen O'Mara, D.O.
Michael P. O'Mara, D.O.
Stephen R. Ripple, D.O.

James N. Weinstein, D.O., and
Miriam Weinstein, D.C.
Larry J. Wells, D.O.

CLASS OF 1978

Jeffrey A. Mills, D.O.
M. Jay Porcelli, D.O., M.H.P.E., Ph.D.,
FACOF, dist. '78, and Marie Porcelli#
Carl W. Wooldridge, D.O.

CLASS OF 1979

Michael J. Blend, Ph.D., D.O., and
Lesly C. Blend#
James I. Fast, D.O.#
Dale E. Loeffler, D.O.#
John M. Petersen, D.O., FAGC
Paul K. Rosenberg, D.O.

CLASS OF 1980

Gregory Z. Mavian, D.O.#
F.B. Shannon, D.O.
Kenneth Wolnak, D.O.

CLASS OF 1981

Stephen G. Krates, D.O.
Paul Kwok, D.O.#
Rudolph Moise, D.O.#
Lawrence K. Sands, D.O.#
George P. Saridakis, D.O.

CLASS OF 1982

David C. Garretson, D.O.
Richard P. Jennings, D.O.#

CLASS OF 1983

Mark G. Lewis, D.O.#
Cathy L. Munro, D.O., and
Steven L. Burandt, D.O.#
Timothy P. Obarski, D.O.

Eric R. Sover, D.O., and
Maryellen Sover#

CLASS OF 1984

Sharon K.J. Cathcart, D.O., and
Ken Cathcart#
David A. Cornell, D.O.

John N. Kasimos, D.O., M.S., M.S.H.C.E.,
and Helen Papadakis-Kasimos#

Michael S. O'Connor, D.O.#
Michael A. Pasquarella, D.O.#
Eileen P. Ryan, D.O.#

CLASS OF 1985

Dirck A. Curry, D.O.#
Bernadette B. Gniadecki, D.O.#
John S. Golden, D.O.
Donald D. Higgins Jr., D.O.#

Jerry P. Oliaro, D.O.

CLASS OF 1986

Madeline R. Lewis, D.O.#

CLASS OF 1987

Mark A. Dobbettien, D.O.#
Patricia A. Higgins, D.O.#

CLASS OF 1988

Lisa A. Dynan-Dobbettien, D.O.#
Michael G. Dunleavy, D.O.#

CLASS OF 1989

Martin C. Burke, D.O.

CLASS OF 1991

Andrew Kotis, D.O., M.S., FACC,
FSCAI, FACOI

Mahmood I. Siddique, D.O., and
Reshmi Siddique, Ph.D.#

CLASS OF 1992

John R. DeForest, D.O.
Joby Kolsun, D.O.

CLASS OF 1993

Paul J. Allegretti, D.O.#
Steven E. Kruis, D.O.

CLASS OF 1994

John H. Clancy, D.O.
Tara L. Clancy, D.O.
Bhagvanji M. Meghpara, D.O.

CLASS OF 1995

Robert J. Mitchell, D.O.

CLASS OF 1996

Samuel A. Allen, D.O.
Yolanda R. Escalona, D.O.
Matthew S. Hanlon, D.O., and
Colleen Diane Hanlon, D.H.S.
Paul A. Oland Jr., D.O.

CLASS OF 1997

Michael M. Bond, D.O. #
Anthony L. Buscaglia, D.O.
Gina L. Dietrich, D.O.
Denise T. Ibrahim Allegretti, D.O.#
Linda Theotokatos, D.O.

CLASS OF 1999

Brett L. Keller, D.O.

CLASS OF 2002

Aurabind Balagani, D.O.#
Jonathan F. Williams, D.O.

CLASS OF 2004

Angelica L. Tolentino, D.O.

CLASS OF 2005

George Sarkis Caleel, D.O.
Mark W. Robinson, D.O.

CLASS OF 2006

Raed Rahman, D.O., and
Grace Rahman
Deena G. Raval, D.O.#

CLASS OF 2010

Brian Reza Poustinchian, D.O.#

COLLEGE OF PHARMACY, DOWNERS GROVE CAMPUS

CLASS OF 1999

Iqbal I. Atcha, M.B.A., RPh, and
Amy Atcha#

Alysha D. Fluno, Pharm.D., and
Brian R. Fluno#

CLASS OF 2002

Susan Cornell, Pharm.D.
Meenaxi B. Meghpara, Pharm.D.

COLLEGE OF HEALTH SCIENCES, DOWNERS GROVE CAMPUS

CLASS OF 2001

Jenny L. Kolesar-Burke, M.O.T.

COLLEGE OF DENTAL MEDICINE – ILLINOIS

CLASS OF 2016

Edmund Charles March, D.M.D.

ARIZONA COLLEGE OF OSTEOPATHIC MEDICINE

CLASS OF 2000

Stanley B. Czajkowski III, D.O.#

CLASS OF 2001

Rajul M. Vaishnnani, D.O.

CLASS OF 2002

Peter W. Santos, D.O.#

CLASS OF 2008

Zachary L. Worley, D.O.#

**COLLEGE OF PHARMACY,
GLENDALE CAMPUS
CLASS OF 2006**

Thomas Lenton, Pharm.D.#

**COLLEGE OF HEALTH SCIENCES,
GLENDALE CAMPUS
CLASS OF 2012**

Kaitlyn Elizabeth Gage, M.S.

**ARIZONA COLLEGE OF
PODIATRIC MEDICINE
CLASS OF 2017**

Sophia Stocks, D.P.M.

**MIDWESTERN UNIVERSITY BOARD,
ADMINISTRATION, FACULTY,
STAFF, STUDENTS**

Joshua C. Baker, M.S., O.D., and
Megan Baker, O.D.#

Janet R. Bolton, and
Barry Bolton

Thomas A. Boyle, D.O., M.B.A.,
FACOEP, FACEP#

Sheri Brownstein, D.M.D.#

Shari Burns, CRNA, Ed.D.#

Manuel H. Cairo, Esq., J.D.

Erik P. Carroll, MPM, B.S.T.M., ITIL, and
Aileen Carroll#

Kelli J. Christensen, D.D.S., M.A.,
FICD

Michael Chutich, D.D.S.

Mae Josephine Ciancio, Ph.D.#

Stan Covington, D.D.S., and
Jill Covington

Michael A. Dietrich, Pharm.D., and
Michelle Dietrich#

Kaila M. Dougherty, O.D., FAAO

William Elza, D.M.D.#

Mitchell R. Emerson, Ph.D., and
Tara Emerson#

Kathleen Fairman, M.A., Ph.D., and
Michael Rucker

Kathleen H. Goepfinger, Ph.D. #

Garo Paul Green

Nicholas J. Haley, D.V.M., Ph.D.#

Christine Halket, D.D.S., M.S.#

Sandra Inouye, Ph.D.#

David J. Kaufman, D.O., and
Deborah J. Seyther, D.O.#

Lori Kemper, D.O., and
David Kemper#

Marilyn Kent Tapajna, M.A.T.,
CCC-SLP/L #

Phillip G. Kopf, Ph.D.

Anne LaValle, D.D.S.

John Ladowicz, M.B.A., and
Kathy Ladowicz#

Mary W.L. Lee, Pharm.D., BCPS, FCCP

James C. Lin, D.M.D.

Colin A. MacPherson, M.A.,
CCC-SLP#

Catherine A. Macyko, M.D.#

Angela Marty, M.A., PHR#

Marian P. O'Brien, M.S.#

Gregory O'Coynce, CPA, and
Jenny Schultz#

Stephen Palatinus, D.D.S., M.P.H.

James Pashayan, D.D.S., M.A.Ed.#

Sunil Philip, D.M.D.

Fred D. Romano, Ph.D., M.S.#

James Richard Roush, Ph.D., PT

Gregory M. Schuster, D.D.S.#

Carrie Sincak, Pharm.D., BCPS#

Matthew Sweeney, CPA#

Shawn Tennant, Pharm.D., M.B.A.,
and Cory Tennant#

Timothy R.S. Toepke, D.D.S., and
Pamela Jurgens-Toepke, D.D.S., M.A.#

Melanie A. Violand, D.P.M., FACFAS#

James Woods, Ph.D., and
Sue Woods#

Yir Gloria Yueh, Ph.D.#

**MIDWESTERN UNIVERSITY
FRIENDS**

Donald Bilse, Ph.D., and Carol Bilse

Shiela K. Blackwood

Herman Chanen†

Jerilyn and William Cowen

Tony and Cynthia Diefert

Nancy F. Fjortoft, Ph.D.

Betty A. Iura†

Jerald and Charlotte Johnson#

Preeti Kansal, M.D.

Paula Kourian

Barbara L. McCloud, J.D., M.B.A.#

Saveria Michels#

Ted and Ruth Ogden

Kathleen P. O'Hagan, Ph.D., and
Kyle H. Ramsey, Ph.D.#

Lynn R. Patton, M.S., RPh., BCNSP

Scott Perkins, M.D.

Linda S. Popoff#

Sylvia Ratkowski

David Sandercock

Devinder Singh, M.D., and
Randeep Singh#

Alene Stranik

Scott West, D.O.

Frank and Suzan Woodbeck

Colonel Walter Wright, USAF, Retired,
and Ingrid Wright#

**MIDWESTERN UNIVERSITY
CORPORATE/FOUNDATION MEMBERS**

Abbvie, Inc.

Aetna Student Health Agency, Inc.

Albertsons Companies

Alcon Laboratories, Inc.

Arizona Dental Anesthesia, PLLC

Arizona Optometric Charitable
Foundation, Inc.

Bako Medical Education Foundation

Barnes and Thornburg

Bien-Air USA, Inc.

BHHS Legacy Foundation

Blue Cross Blue Shield of Arizona

C.J. Erickson Plumbing Company

Chanen Construction Company, Inc.

Chartwells Dining Service

Chicago College of Osteopathic
Medicine Alumni Association

City of Glendale

Connolly Electric Co.

CSI Leasing, Inc.

CVS Health

Delta Dental of Illinois Foundation

Dr. Newton K. Wesley Foundation

Duly Health and Care Charitable
Fund of the DuPage Foundation

DWL Architects + Planners, Inc.

EPIC Systems Corporation

ETHAPAX Fund

EyeCare Partners

F.E. Moran, Inc.

Focused Partner Brokers

Fry's Food Stores

Goodmans Interior Structures

Heartland Dental Care

Henry Schein, Inc.

HS Lopez Family Foundation

Illinois Academy of General Dentistry

Illinois Optometric Association

Illinois Pharmacists Association
Foundation

Industrial Development Authority

ISDS Foundation

J.L. Adler Roofing & Sheet Metal

J.P. Morgan Chase & Co.

Kare for Me Foundation

Keplr Vision

L. Roy Papp & Associates, LLP

Lakeview Foundation

LSW Engineers Arizona, Inc.

McS Charitable Foundation

Meijer, Inc.

MICA

Midmark Corporation

Midstate Mechanical, Inc.

Morgan Stanley

MyEyeDr.

National Vision

Nina Mason Pulliam Charitable Trust

RBC Capital Markets, LLC

Risk Strategies Education

Riverside Medical Center

Rotary Club of Downers Grove

Royal Oaks Life Care Community

Shopko

SJ Advisors, LLC

SL Capital Strategies, LLC

Snell & Wilmer, LLP

Sun Valley Masonry, Inc.

Tucson Osteopathic Medical
Foundation

VSP Global

Walgreens

Wells Fargo Bank, N.A.

Wisconsin Vision

**BLUE AND GOLD SOCIETY
ANNUAL GIFTS UP TO \$999**

**CHICAGO COLLEGE OF
OSTEOPATHIC MEDICINE
CLASS OF 1959**

Gaspar F. Ruffino, D.O.

CLASS OF 1961

Barry Sachs, D.O.

CLASS OF 1962

Harvey C. Kiley, D.O.

CLASS OF 1963

Thomas J. Carney, D.O.

CLASS OF 1964

Paula L. Eschtruth, D.O.#

Edward G. Murphy, D.O.

CLASS OF 1965

Lawrence K. Lief, D.O.#

Ronald I. Rothenberg, D.O.#

CLASS OF 1967

James D. Harris, D.O.

Martin B. Thumim, D.O.

CLASS OF 1968

Anthony M. DiGiovanni, D.O., FACOI

Terrence R. Frank, D.O.

Larry D. Hendricks, D.O., and
Teri Hendricks

William P. Penn, D.O.

CLASS OF 1970

I. Martin Kraus, D.O., and
Marcia B. Kraus#

Richard J. Solyn, D.O.#

Robert J. Tomchuck, D.O.

George R. Venhuizen, D.O.#

CLASS OF 1971

Michael G. Brown, D.O.
Dennis W. Cappitelli, D.O., and
Lana Cappitelli#

CLASS OF 1972

George L. Clark, D.O.
Bruce A. Wineman, D.O., and
Catherine Wineman

CLASS OF 1973

W. Lee Irving, D.O.#
Stanley B. Kantor, D.O.#
Sharon A. Kobak, D.O.
William J. Mandell, D.O.

CLASS OF 1974

Nicholas M. DiFilippo, D.O., and
Margaret DiFilippo#
Richard I. Glassman, D.O.#
Roger Y. Wong, D.O.#

CLASS OF 1975

Gary E. Kolb, D.O.#
Charles A. Neumann, D.O.#

CLASS OF 1976

John F. Lennox, D.O.
Mark J. Reiner, D.O.#
Joel S. Shoolin, D.O., and
Michele Shoolin#

CLASS OF 1977

Thomas M. Bell, D.O.
Diane A. Boes, D.O.
Evans J. Farres, D.O.#
Paul A. Martin, D.O., and
Teresa K. Martin#
Stanley F. Uchman, D.O.

CLASS OF 1978

David J. Boes, D.O.
Scott A. Goeller, D.O.#
Paul A. Pyka, D.O.#
Patricia R. Raftery, D.O.#
J. Dale Utt, D.O.
Thomas D. Vrable, D.O.
Lewin Wyatt Jr., D.O.†, and
Lillie Wyatt#
Charles J. Zeller, D.O., and
Karen Zeller

CLASS OF 1979

Michael M. Bell, D.O.
Thomas E. Howard, D.O.
Emely Karandy, D.O.
Scott K. Kellogg, D.O., J.D., and
Linda Griffith, M.D.

Kerry H. Sullivan, D.O.

CLASS OF 1980

Paul E. Gray II, D.O.
Earl L. Jordan Jr., D.O.
Rick D. Kellenberger, D.O.
Michael I. Margolis, D.O.
James A. Sliwa, D.O.
James A. Tita, D.O., and Mary Tita

CLASS OF 1981

W. Damian Kramer, D.O.#
Glenn R. Leslie, D.O.
Paul J. Pierron, D.O.#
Samuel J. Santoro, D.O.

CLASS OF 1982

Nancy C. Kloetzli, D.O.
Craig K. Maclean, D.O.#
Donald W. Morando, D.O.#
Daniel A. Pacella, D.O., FACOS
Joseph P. Prieboy, D.O., and
Jane Prieboy#

John A. Sellick Jr., D.O.

Mary R. Suchyta, D.O.#

Steve A. Weber, D.O.#

CLASS OF 1983

Alan L. Barnett, D.O., and
Whitney Barnett
Timothy J. Bonatus, D.O.

Marc Mayer, D.O.

Joyce A. McDonald, D.O.#

David R. Melzer, D.O.

Mark C. Netzel, D.O.

Kenneth P. Tarr, D.O.#

CLASS OF 1984

Dominic Costabile, D.O., and
Barbara Costabile
Craig A. Dove, D.O.#
Richard H. Geiger, D.O., and

Dena Geiger

Louis Papaeliou, D.O., M.P.H.

Michael S. Pizzato, D.O.#

CLASS OF 1985

Douglas P. Webster, D.O., FACOEP#

CLASS OF 1986

Kathryn R. Burke, D.O.
Matthew B. Dewys, D.O.
Charles R. Ireland, D.O.
Susan E. Marcotte, D.O.
Mary J. Neustifter, D.O.
Janet F. Stastny, D.O.
James H. Vasilakis, D.O.#

CLASS OF 1987

Keith C. Anderson, D.O.

Bill P. Evans, D.O.#

CLASS OF 1988

Patrick J. Camodeca, D.O.#

CLASS OF 1989

Linus Ema, D.O., and Yoko Ema#
Pamela R. Seaman, D.O.
Sandra L. Sleszynski, D.O.

CLASS OF 1990

Mary F. Asterita-Robol, D.O.
Marc H. Brickman, D.O.
Renzo G. Mieves, D.O.#
Patrick F. Para, D.O., and Mary Jo Para
Julia Shuleshko, D.O.#
Edward J. Walko, D.O.#

CLASS OF 1991

David M. Suhrbier, D.O.

CLASS OF 1992

Jean R. Gogolin, D.O.

CLASS OF 1993

Debbie J. Panke, D.O.
Larry E. Seals, D.O.

CLASS OF 1994

Adam L. Kouyoumjian, D.O.
Barry M. Laskoe, D.O.
Kavita Raj, D.O.
Steven H. Wolfman, D.O.

CLASS OF 1995

Paul J. Adams, D.O.
John R. Denning, D.O.

CLASS OF 1996

Ronald P. Flauto, D.O.
Tobin J. Fraser, D.O.
Matthew J. Spiewak, D.O.#

CLASS OF 1997

Neil M. Campbell, D.O.#
Kimberly S. Carlson, D.O., and
Charles C. Robichaud
Andrea S. Clem, D.O.
John S. Potts, D.O.#
Dean A. Raffaelli, D.C., D.O., and
Charlotte Keer

CLASS OF 1998

Kenneth S. Bishop, D.O.
Gene E. Denning, D.O., FAAP#
Kurt A. Ludwig, D.O.
Laura M. Ludwig, D.O.#
David A. Tessler, D.O.#

CLASS OF 1999

Asad S. Aziz, D.O.
Daniel R. Kendall, D.O.
Todd P. Levin, D.O.

CLASS OF 2000

Sean C. Atchison, D.O.#
Timothy J. Conlon, D.O.#
Nicholas J. Zoretic, D.O.

CLASS OF 2001

James J. Petrikas, D.O.
Chester H. Robson, D.O.

CLASS OF 2002

Lismaida Maranto, D.O.#

CLASS OF 2003

Richard R. Symanski, D.O.

CLASS OF 2004

Lee D. Logan, D.O.
Jennifer A. Pennington, D.O.

CLASS OF 2006

Dmitry V. Shmerkovich

CLASS OF 2007

Lionel Holden Lee, D.O.#

CLASS OF 2008

Marc Stuart Kolpon, D.O.#
Amy C.M. Peters, D.O.

CLASS OF 2014

Thomas Murphy, D.O.

CLASS OF 2019

Paul Thomas Kozak, D.O.

**COLLEGE OF PHARMACY,
DOWNERS GROVE**

CLASS OF 1996

Michael K. McKinley, Pharm.D.

CLASS OF 1998

Reena Pramanik, Pharm.D.#

CLASS OF 2000

Joseph P. Kalvaitis, Pharm.D.

CLASS OF 2001

Louis A. Ferraro, B.S.Ph.
Cheryl F. Hanauska, Pharm.D.

CLASS OF 2002

Jieun Roh, Pharm.D.#

CLASS OF 2003

Julie L. Aiello, Pharm.D.
Karl H. Mark, B.S.Ph., RPh#
Christina C. Yeung, Pharm.D.#

CLASS OF 2004

Virginia Blessing, Pharm.D., and
Michael Blessing

CLASS OF 2006

Sabina Ahmad, Pharm.D.
Abimbola A. Akinlawon, Pharm.D.
Jori Lyn Bailey, Pharm.D.#
Danielle L. Gerner, Pharm.D.

CLASS OF 2007

Lindsay B. Mitzi, Pharm.D.
Tara Mongkolpradit, Pharm.D.#
Blessing Damilola Ogundele,
Pharm.D.
Shibani H. Shah, Pharm.D.
CLASS OF 2010
Christine Stagen Reyes, Pharm.D.

**COLLEGE OF HEALTH SCIENCES -
DOWNERS GROVE CAMPUS**

CLASS OF 1998

Theodore Holroyd, M.M.S.
Mary A. Petrikas, M.P.T.

CLASS OF 2002

John Paul Dehler, PA-C

CLASS OF 2003

Kathy J. Swindle, M.M.S.

CLASS OF 2011

Greg Darren Sauder, M.O.T., OTR/L

CLASS OF 2016

Amy Coath, M.S.
Stephanie Ruff, D.P.T.#
CLASS OF 2018
Allison Marie Abrahamian, D.P.T.

**COLLEGE OF DENTAL
MEDICINE – ILLINOIS**

William E. Uthoff, D.M.D.

**ARIZONA COLLEGE OF
OSTEOPATHIC MEDICINE**

CLASS OF 2000

Rakhee Madan, D.O.
David E. Ward, D.O.

CLASS OF 2002

James W. Cagle, D.O.

CLASS OF 2003

Julie M. Mills, D.O.

CLASS OF 2014

Joshua Jed Millar, D.O.

CLASS OF 2015

Richard Jacob VanTienderen, D.O.

**ARIZONA COLLEGE OF
OPTOMETRY**

CLASS OF 2013

John Matthew B. Gill, O.D.#

**COLLEGE OF PHARMACY,
GLENDALE**

CLASS OF 2001

Michelle C. Sharley, Pharm.D.#

CLASS OF 2007

Molly S. Colombo, Pharm.D.
Amy Drew, Pharm.D.#
M. John Gass, Pharm.D., and
Anna Gass

**COLLEGE OF HEALTH SCIENCES –
GLENDALE CAMPUS**

CLASS OF 2000

Traca Rachelle-Bear Cagle, PA-C

CLASS OF 2005

Soly R. Houy, M.M.S.

CLASS OF 2021

Elizabeth Hayes, M.A.

**COLLEGE OF DENTAL MEDICINE –
ARIZONA**

CLASS OF 2021

Joshua Sapell Raiffe, D.M.D.

**MIDWESTERN UNIVERSITY BOARD,
ADMINISTRATION, FACULTY,
STAFF, STUDENTS**

Gifty Abraham, O.T.D., OTR/L

Dolly Alexander, M.A.

Rita Ator, PT, D.P.T., OCS

The Honorable Jean L. Baxter, J.D.

Karen L. Berrigan, D.M.D.#

William A. Brachvogel, D.D.S.#

Jared Chamberlain, Ph.D.

Stephanie Cotton Christensen, Ph.D.,
CCC-SLP

Kristen Clement, B.S.#

Marc P. Cohn, D.D.S.#

Russell W. Cyphers, D.D.S.#

Janece M. Davis, D.D.S.#

Lindsay E. Davis, Pharm.D., BCPS#

Sally Jo Detloff, M.S., B.S.#

Karyn DiNovo, B.S.#

David Dodell, D.M.D.#

Joshua R. Edwards, Ph.D.

Jason Michael Evans, D.V.M., M.S.,
B.S.#

Michael J. Fay, Ph.D., and
Dana Fay#

Greig Florento, D.D.S.#

John R. Francis, D.D.S., M.S.#

Victoria Franks, M.Adm.#

Sudhindra R. Gadagkar, Ph.D.#

Gregory J. Gaus

Staci A. Glass, and George Glass

Teresa Gonsalves

Harold J. Haering, D.M.D., and
Yazmin Haering#

Steven R. Haub, D.D.S.#†

Alexander Hellge, D.D.S.#

Elizabeth E. Hull, Ph.D.

David Jenkins, D.P.M., FACFAS#

Robert B. John, D.D.S., and
Yvonne John

Laurence D. Johns, D.D.S., M.S.D.#

Eric Johnson, D.D.S.

Gary Johnson, D.D.S.#

Medha D. Joshi, Ph.D.

Matthew E. Kaiser#

Anne Kiraly-Alvarez, O.T.D., OTR/L,
and Jaime Kiraly-Alvarez

Robert Kramer, D.M.D.#

Lisa Mahaffey, Ph.D., OTR/L, FAOTA

Shelly McBride

Thomas F. McDaniel, D.M.D.,
FAGD#

Denise Mills, D.D.S., M.H.A., Ed.D.#

Avery Noel Owen Moen

Sandhya Noronha, M.D.#

Karen Owens, M.B.A.#

Vijay Parashar, D.D.S., M.S.#

Diana Patarrojo, D.D.S.

Kevin Lee Patterson, D.D.S.

Juliann Petersen, PHR#

Pamela Potter, Ph.D.#

Teresa Pulido, D.D.S., M.S.#

Brian Purdy, CPA#

Prasanth Nair Puthanveetil, Ph.D.

Michael Quinlan, Ph.D.#

Humza Raj, B.S.#

Erin C. Raney, Pharm.D., BCPS

Parveen Ranjan, M.D., M.P.H.#

Lendell Richardson, M.D.#

Cai Morgan Roberts, Ph.D.

Eugenia Popescu Roberts, D.D.S., and
Bradley Roberts, D.D.S.#

Lydia Royeen, Ph.D., OTR

James Rubinstein, M.M. ITIL

Reem Sabbagh, D.D.S.

Thomas Sarna, D.D.S., M.S.

Philip Schefke, D.D.S.

Tammy G. Schmidt, B.A.#

Shannon Sesterhenn, M.S., Ed.D.

LeeShelle Short, B.S., M.H.R.M.

Teri Steinke, RDH#

Kenneth E. Sullins, M.S., D.V.M.,
DACVS#

Michelle Swanson-Mungerson, Ph.D.

Julie A. Swartzendruber, Ph.D.

Johana Vallejo-Elias, Ph.D., B.Sc.#

Chad Vandenberg, Pharm.D., M.S.,
BCPP

Thomas Virden, Ph.D.#

Bradley Wall, D.M.D.#

Debra Walsh

Gina Wesolowski#

Larry N. Williams, D.D.S., M.P.H.#

Chad Worth#

Vladimir Yevseyenkov, O.D.,
Ph.D.#

**MIDWESTERN UNIVERSITY
FRIENDS**

Iris Abelson Weissman

Ronald Bahling

Kathy J. Barker

Richard and Sharon Battaglia

Clifford and Helaine Bell

Susan K. Berner

Daniel K. Boden, D.M.D.#

Victor and Rose Chirkin

Margaret Chrymko

Charles Dizard

Andrew Donnelly, Pharm.D., and
Janet Engle Donnelly

James and Sheila Doud

Omar Eltalebani

Michael and Sandra Escuder

Donna C. Esposito

Barbara Farmer

Barbara H. Griffa

William and Nance Harris

Bruce Heatwole

Michael Hillier

Gail Hughes

Chi Sown Ko, M.D., and Sau Chun Ko#

Karen Kontak

Kay Krieger

Susan Ksiazek

David and Karen Lester

Bob and Ann McCarthy

Nolawi and Sangeeta Mengesha

Kennedy W. Merritt, D.D.S.#

Tuyen Mey

Tom and Lynne Moore

Eugene and Kathleen Morse

Michael Mullaney

Marvin Nasses

Elmer Nossaman, O.D., and
Charlotte Nossaman

Terri Pauletich#

Elizabeth King Powers

Theodore J. Pyrak

Jeffery Qualkinbush and
Julie Qualkinbush

Catherine Reinard

Mark Reinsch

Joe and Nives Rizza

Cynthia Robinson

Osama Said, O.D.

Lonnie L. Sbert

Linda Schwerzler

Fred and Rhoda Shulman

Eleanor J. Smith

Eileen Suarez#

Adam and Heather Troidl

Alan Troidl

Michael Troidl

Tim and Paige Wangler
Elizabeth A. Warren
Katherine Worden, D.O.#

MIDWESTERN UNIVERSITY CORPORATE/FOUNDATION MEMBERS

Acuity Eye Group
American Academy of Optometry
Bausch & Lomb Americas Inc.
Canteen Vending Services
Christopher B. Burke Engineering, LTD
Comprehensive Pharmacy Services
Downers Grove Economic Development Corporation
Elliot Construction Corp.
Eye to Eye Careers
Garfield Refining Company
Gilead Sciences, Inc.
GordonGraphics, Inc.
GOS, LLC
Hill Mechanical Corporation
Humana
Illinois Council of Health System Pharmacists
Lindahl Brothers Inc.
Mackie Consultants, LLC
Maher Medical Practice Consulting
Mariano's Pharmacy
Marion Eye Centers and Optical
National Waterproofing & Roofing
NBC Sports Chicago, LLC
Northwestern Medicine
Peoria Animal Hospital, PLLC
Precise Printing Network, Inc.
Raymond James
Rosin Eyecare
Success Vision Express
SVS Vision
United Pharmacy Staffing
Voyageur One, Inc.

Wal-Mart Stores
Warby Parker, Inc.
WGN Radio
Willis Towers Watson
Workday

THE HERITAGE CIRCLE

RECOGNIZES ALUMNI, PARENTS, AND FRIENDS WHO MAKE A DEFERRED GIFT TO THE INSTITUTION

Keith C. Anderson, D.O. '87
Howard B. Babcock, D.O. '76†
John A. Bamberl, D.O., and
Kathy A. Bamberl
Alan L. Barnett, D.O. '83, and
Whitney Barnett
Michael J. Blend, Ph.D., D.O. '79, and
Lesly C. Blend
Stuart L. Bloom, D.O. '66, and
Barbara Bloom, LCSW
Kenneth W. Blumenthal, D.O. '78
Susan Brassfield, M.B.A.
Phyllis Brickner
Chester J. Buziak, D.O. '60, and
Maria Buziak
Julie Cardinale, SPHR
Gerard A. Catapano, D.O. '59, and
Carole J. Catapano, RN
Herman Chanen†
Mark E. Efrusy, D.O. '70†
Paula Eschtruth, D.O. '64
Claude A. Foreit, D.O., M.H.A., '88
Pamela A. Georgeson, D.O.,
FAAAAI '83
Richard A. Herbert, D.O. '71
Raymond Hui Hei Hon, M.S., CRNA '11
Mrs. Lon A. Hoover
S. Gayle Hornberger, D.O. '94
Jonathan R. Javors, D.O. '80
Jeffrey T. Johnson, D.O. '73
Karen D. Johnson, Ph.D.

Stephen G. Kanrich, D.O. '78
I. Martin Kraus, D.O. '70, and
Marcia B. Kraus
Richard J. Krejsa, D.O. '76† and
Gloria Krejsa
David Kuo, D.O. '80, and Brenda Kuo
George J. Leach, D.O. '71
Arthur R. Levine, D.O. '65
Paul A. Martin, D.O. '77, and
Teresa K. Martin
Marc Mayer, D.O. '83
Joyce A. McDonald, D.O. '83
Karen Nichols, D.O., M.A., MACOI, CS,
and James Nichols
Mildred Noreen
Jeffrey Page, D.P.M., and Kristy Page
Michael S. Pizzato, D.O. '84
M. Jay Porcelli, D.O., M.H.P.E., Ph.D.,
FACOPF, dist. '78, and Marie Porcelli
Virginia Reter
Lawrence K. Sands, D.O. '81
Fran Schillinger
Michael D. Settecase, D.O. '80
David A. Solce, D.O. '72, and
Angela Solce
Louis Sommerhalter, D.D.S., and
Judy Sommerhalter
Jerome R. Stewart, D.O. '65, and
Rosemary Stewart
Alene Stranik
F. Robert Suchyta, D.O. '73
Mary R. Suchyta, D.O. '82
Michael J. Sutton, D.O. '78
Kenneth P. Tarr, D.O. '83
Chris G. Theodoran, D.O. '82
Katherine M. Thomas, D.O. '77
Mark D. Westfall, D.O. '87, and
Jean Westfall
Lewin Wyatt Jr., D.O. '78†, and
Lillie Wyatt
Vladimir Yevseyenkov, O.D., Ph.D.

CORPORATE/FOUNDATION GIVING SOCIETIES

DIAMOND SOCIETY LIFETIME GIFTS OF \$1,000,000 AND ABOVE

Albertsons Companies
Osteopathic Heritage Foundation
PetSmart Charities
Walgreens

BENEFACTOR SOCIETY LIFETIME GIFTS OF \$100,000 - \$999,999

Alcon Laboratories, Inc.
American Drug Stores
American Stores Charitable
Foundation
APMA Educational Foundation, Inc.
APS
Arizona Optometric Charitable
Foundation, Inc.
Baxter International Inc.
BHHS Legacy Foundation
Bien-Air USA, Inc.
Blue Cross Blue Shield of Arizona
Chanen Construction Company, Inc.
Chicago College of Osteopathic
Medicine Alumni Association
Chicago Osteopathic Hospital Guild
Clintec Nutrition Company
CVS Health
Delta Dental of Illinois Foundation
DWL Architects + Planners, Inc.
HonorHealth
Jumet Charitable Foundation
Lakeview Foundation
McS Charitable Foundation
MICA
Midwest Physician Group, LTD
Nina Mason Pulliam Charitable Trust

Pfizer, Inc.
Pharmacia & Upjohn Foundation
Podiatry Insurance Company of
America
St. James Hospital and Health Center
Susarla Primary Care
Tempe St. Luke's Hospital
TriWest Healthcare Alliance
Tucson Osteopathic Medical
Foundation
WalMart, Inc.
Wells Fargo Bank, N.A.

INVESTOR SOCIETY LIFETIME GIFTS OF \$10,000 - \$99,999

Abbott Laboratories
Abrazo Health Care
Acadental, Inc.
Accurate Glass
Advance PCS
Advanced Structural Engineering, Inc.
Aetna Student Health Agency, Inc.
AHA Fulfillment Center/Channing
Allergan
American Dental Partners
Foundation
American Diabetes Association
American Osteopathic Association
American Optometric Association
Foundation
Amgen, Inc.
Arizona Complete Health
Arizona Humane Society
Arizona Osteopathic Medical
Association
Association of Indian Pharmacists
in America
AstraZeneca, LP
Automated Logic
Arizona Foundation for Osteopathic
Medical Education
AZ Pain Centers

† Deceased

AZ Pet Vet Holding, LLC
 Bako Medical Education Foundation
 Banner Health
 Barnes & Thornburg
 Bashas', Inc.
 Bicon, LLC
 Boehringer Ingelheim Pharmaceuticals, Inc.
 Boehringer Mannheim
 C.J. Erickson Plumbing Company
 Cancer Treatment Centers of America
 Casino Arizona Talking Stick Resort
 Celebrity Fight Night Foundation
 Chapman & Cutler, LLP
 Chartwells Dining Service
 Christopher B. Burke Engineering, LTD
 City of Glendale
 City of Hope Phoenix
 Columbia HCA Healthcare Corporation
 CONN TV-VIDEO
 Cooper Vision
 College of Pharmacy Downers Grove Executive Council
 Crowe, LLP
 CSI Leasing, Inc.
 Delta Dental of Arizona Foundation
 DentalEZ Integrated Solutions
 Designs for Vision, Inc.
 Dik Drug Company
 Dr. Newton K. Wesley Foundation Fund
 Duly Health and Care Charitable Fund of the DuPage Foundation
 Eckerd Corporation
 Eli Lilly & Co.
 EMP Management Group, LTD
 Ernst & Young, LLP
 Express Scripts, Inc.
 Federated Department Stores Foundation
 Field Foundation of Illinois

Focused Partner Brokers
 Frances G. Butler Trust
 Franciscan Health Olympia Fields
 Fry's Food Stores
 G.D. Searle & Co.
 Gaylor Electric, Inc.
 GlaxoSmithKline
 Glendale Rotary Club
 God First Ministries
 Goodmans Interior Structures
 Grand Canyon University
 Hardrock Concrete Placement Company, Inc.
 Heartland Dental Care, Inc.
 Henry Schein
 Hill Mechanical Corporation
 Hook Drug Foundation
 Hsiu Mei and Jang Ping Chen Foundation
 Humana
 Humiston Keeling, Inc.
 Hyde Park Bank & Trust Co.
 IASIS Healthcare
 Illinois Association of Community Pharmacists
 Illinois Council of Health System Pharmacists
 Illinois Health Foundation
 Illinois Institute of Technology
 Illinois Pharmacists Association Foundation
 Industrial Development Authority
 Interad, Inc.
 ISDS Foundation
 ISEC, Inc.
 Ivoclar Vivadent, Inc.
 J.L. Adler Roofing & Sheet Metal
 Jacobs Engineering Foundation
 Janssen Pharmaceuticals
 Jason Madachy Foundation
 John F. Long Foundation
 John W. Anderson Foundation
 Johnson & Johnson

J.P. Morgan Chase & Co.
 Keplr Vision
 Kmart Corporation
 KMPI, Inc.
 Kobor Family Foundation
 Kroger
 LaSalle National Corp.
 Leehar Distributors
 Level 3 AudioVisual, LLC
 Lombart Instruments, Inc.
 Longs Drug Stores
 LSW Engineers Arizona, Inc.
 Mackie Consultants, LLC
 Maddie's Fund
 Magic Johnson Foundation
 Maricopa Community College District
 Marion Laboratories
 Marion Merrell Dow, Inc.
 Max Goldenberg Foundation
 McGraw Foundation
 McGuire Woods, LLP
 McKesson HBOC Foundation, Inc.
 Medicis Global Services Corporation
 Meijer, Inc.
 Merck & Co., Inc.
 Metabolic Analysis Labs, Inc.
 Metro Cleaning Company
 MICA Imaging Corporation
 Midmark Corporation
 Midstate Mechanical, Inc.
 Midwestern Study Conference
 Morgan Stanley
 NACDS
 National Dentex Corporation
 National Pharmacists Association
 National Vision
 NCPDP Foundation
 New Mexico Osteopathic Foundation
 Novo Nordisk Pharmaceuticals
 OneAZ Credit Union
 OptioRX

Papp Family Foundation
 Partnership with Native Americans
 Peoples Gas Light & Coke Co.
 Pete King Construction Company
 Pharmacists Mutual Insurance Co.
 Phoenix Children's Hospital
 Piper Sandler Companies
 PNV Motors, LLC
 Prime Care Hospice
 RBC Capital Markets, LLC
 RBC Dain Rauscher
 Revco D.S., Inc.
 Rex Electric, Inc.
 Richmond Products, Inc.
 RICOH Americas Corporation
 Rite Aid Corporation
 Riverside Medical Center
 Robert McCormick Charitable Trust
 Robert Wood Johnson Foundation
 Rotary Club of Downers Grove
 Royal Oaks Life Care Community
 Rush-Presbyterian Medical Center
 S & S Paving & Construction, Inc.
 Salt River Pima – Maricopa Indian Community
 Scottsdale Healthcare Osborn Medical Center
 Shopko
 Simar, Inc.
 SJ Advisors, LLC
 SmithKline Beecham Foundation
 Smith Kline & French Labs
 Snell & Wilmer, LLP
 Southwest Ambulance
 Stephenson Family Foundation
 Sun Health Corporation
 Sun Valley Masonry, Inc.
 Talman Home Federal Savings & Loan Association
 Target Stores
 The Colby Foundation
 The Ellman Companies
 The Josiah Macy Jr. Foundation

The Prairie Foundation
 The Retirement Research Foundation
 Tsang Family Foundation
 Valley Arthritis Care, LLC
 Voyageur One, Inc.
 VSP Global
 Walt Szadzinski & Associates, Ltd.
 Walters & Wolf Construction Specialties, Inc.
 Willis Towers Watson
 Woodland General Hospital Guild
 Wyeth Pharmaceuticals

HONORARY, MEMORIAL, AND IN-KIND GIFTS

HONORARY GIFTS

MADE IN HONOR OF A FAMILY MEMBER, FRIEND, CLASSMATE, COLLEAGUE, OR PET

Those who were generously honored (in bold) and their benefactors are listed here

Russl Altabtabae, D.P.M. '21
 Omar Eltalebani

Joshua C. Baker, M.S., O.D.
 Kathleen H. Goeppinger, Ph.D.

Thomas A. Boyle, D.O., M.B.A., FACOE, FACEP
 Kathleen H. Goeppinger, Ph.D.

Sheri Brownstein, D.M.D.
 Kathleen H. Goeppinger, Ph.D.

Chester J. Buziak, D.O. '60
 Richard A. Herbert, D.O. '71

Manuel H. Cairo, Esq., J.D.
 Kathleen H. Goeppinger, Ph.D.

Rebecca Caleel
 George Sarkis Caleel, D.O. '05

Erik P. Carroll, MPM, B.S.T.M, ITIL
 Kathleen H. Goeppinger, Ph.D.

Rebecca Caleel
 George Sarkis Caleel, D.O. '05

Jared Chamberlain, Ph.D.
Kathleen H. Goepfing, Ph.D.

Chicago College of Osteopathic Medicine Class of 1972
Jean A. Loludice, D.O. '72

Christina A. Esposito, O.D. '13
Jerilyn and William Cowen

Kaila M. Dougherty, O.D., FAAO
Kathleen H. Goepfing, Ph.D.

Mitchell R. Emerson, Ph.D.
Kathleen H. Goepfing, Ph.D.

Dana Fay, B.A., B.S.
Kathleen H. Goepfing, Ph.D.

Michael J. Fay, Ph.D.
Kathleen H. Goepfing, Ph.D.

Alicia Feis, O.D.
Kathleen H. Goepfing, Ph.D.

Alice Fast
James I. Fast, D.O. '79

Nancy F. Fjortoft, Ph.D.
Iqbal I. Atcha, M.B.A., RPh '99, and Amy Atcha

Victoria B. Franks, M.Adm.
Kathleen H. Goepfing, Ph.D.

Carla L. Gartrell, D.V.M., J.D.
Kathleen H. Goepfing, Ph.D.

Amy Gibson, M.S., PHR, SHRM-SCP
Kathleen H. Goepfing, Ph.D.

Kathleen H. Goepfing, Ph.D.
Debra Walsh

Harold J. Haering, D.M.D.
Kathleen H. Goepfing, Ph.D.

Ben Hulsey, D.V.M.
Iris Abelson Weissman

Jeffrey L. Jensen, D.P.M.
Kathleen H. Goepfing, Ph.D.

Lori Kemper, D.O.
Kathleen H. Goepfing, Ph.D.

Leon and Mary Ann Kouyoumijian
Adam L. Kouyoumijian, D.O. '94

Monica Kramer, B.B.A.
Kathleen H. Goepfing, Ph.D.

Mary W.L. Lee, Pharm.D., BCPS, FCCP
Iqbal I. Atcha, M.B.A., RPh. '99, and Amy Atcha
Shiela K. Blackwood
Kathleen H. Goepfing, Ph.D.
Joseph P. Kalvaitis, Pharm.D. '00
Chi Sown Ko, M.D., and Sau Chun Ko
Reena Pramanik, Pharm.D. '98

Edith Liang, Pharm.D. '17
Christina C. Yeung, Pharm.D. '03

Angela Marty, M.A., PHR
Kathleen H. Goepfing, Ph.D.

Bibi McCloud
Barbara L. McCloud, J.D., M.B.A.

Gregory O'Coyn, CPA
Kathleen H. Goepfing, Ph.D.

Coretta C. Patterson, D.V.M., DACVIM
Kathleen H. Goepfing, Ph.D.

Fred D. Romano, Ph.D., M.S.
Kathleen H. Goepfing, Ph.D.

James Rubinstein, M.M., ITIL
Kathleen H. Goepfing, Ph.D.

Shannon Sesterhenn, Ed.D.
Kathleen H. Goepfing, Ph.D.

Matthew Sweeney, CPA
Kathleen H. Goepfing, Ph.D.

Daniel Tapia, Ed.D., PMP
Kathleen H. Goepfing, Ph.D.

Adrienne Wassell, CPA
Kathleen H. Goepfing, Ph.D.

James M. Woods, Ph.D.
Kathleen H. Goepfing, Ph.D.

Jaclyn Yeung, D.O. '17
Christina C. Yeung, Pharm.D. '03

Vladimir Yevseyenkov, O.D., Ph.D.
Jerilyn and William Cowen

Yir Gloria Yueh, Ph.D.
Kathleen H. Goepfing, Ph.D.

C.R. Zachem Jr., D.O. '62
Michael S. O'Connor, D.O. '84

MEMORIAL GIFTS MADE IN MEMORY OF A FAMILY MEMBER, FRIEND, CLASSMATE, COLLEAGUE, OR PET

Those who were generously remembered (in bold) and their benefactors are listed here

Michael Anthony Allen
Samuel A. Allen, D.O. '96

Yoshi Anderson
Peoria Animal Hospital, PLLC

Ross B. Baker, D.O. '41
Charles A. Neumann, D.O. '75

Robert M. Balas, D.O. '66
Richard A. Herbert, D.O. '71

Luke Barnett
Alan L. Barnett, D.O. '83, and Whitney Barnett

David J. Berg, D.O. '70
Gail Hughes

Robert B. Breckenfeld, D.O. '72
George L. Clark, D.O. '72

Reed Brown
Russell W. Brown, D.O. '76

John R. Burdick, Ph.D.
Mitchell R. Emerson, Ph.D., and Tara Emerson
Michael Quinlan, Ph.D.
Kyle H. Ramsey, Ph.D., and Kathleen P. O'Hagan, Ph.D.
Johana Vallejo-Elias, Ph.D., B.Sc.

Thunder Burton
Peoria Animal Hospital, PLLC

Edward H. Cairo
Manuel H. Cairo, Esq., J.D.

George T. Caleel, D.O. '55
George Sarkis Caleel, D.O. '05

James S. Cerneka, D.O. '96
Yolanda R. Escalona, D.O. '96, and Paul A. Oland Jr., D.O. '96

Buttons Chumita
Peoria Animal Hospital, PLLC

Justin W. Conlon, D.O. '60
Timothy J. Conlon, D.O. '00

Curtis E. Dedrick, D.O. '96
Yolanda R. Escalona, D.O. '96, and Paul A. Oland Jr., D.O. '96

Arthur G. Dobbelaere, Ph.D.
The Honorable Jean L. Baxter, J.D.
Amy Coath, M.S. '16
Mitchell R. Emerson, Ph.D., and Tara Emerson
Kathleen H. Goepfing, Ph.D.
Sandra Inouye, Ph.D.
Angela Marty, M.A., PHR
Gregory O'Coyn, CPA, and Jenny Schultz
LeeShelle Short, B.S., M.H.R.M.
Matthew Sweeney, CPA
Debra Walsh

Frank M. Dobbettien
Mark A. Dobbettien, D.O. '87, and Lisa A. Dynan-Dobbettien, D.O. '88

Sara Jean Dobbettien
Mark A. Dobbettien, D.O. '87, and Lisa A. Dynan-Dobbettien, D.O. '88

James E. Dynan, M.D.
Mark A. Dobbettien, D.O. '87, and Lisa A. Dynan-Dobbettien, D.O. '88

Becci Eisenhuth
Peoria Animal Hospital, PLLC

Diane Gaus
Gregory J. Gaus
Gregory O'Coyn, CPA, and Jenny Schultz
Matthew Sweeney, CPA

Harold Hakes, Ph.D.
Martin Burke, D.O. '89
Stephen Krates, D.O. '81
Dale E. Loeffler, D.O. '79
Rudolph Moise, D.O. '81
John M. Petersen, D.O., FACG '79
Eileen P. Ryan, D.O. '84
Steve A. Weber, D.O. '82

Mary Harris
James D. Harris, D.O. '67

Kurt A. Haugland, M.S. '12
Kaitlyn Elizabeth Gage, M.S. '12

Amy E. Hillier Chervenak, PA-C '00
James W. Cagle, D.O. '02, and Traca Rachelle-Bear Cagle, PA-C '00
Michael Hillier
Karen Kontak
Cynthia Robinson

Donald E. Jarnagin, O.D.
William and Nance Harris
Bruce E. Heatwole

Robert E. Kappler, D.O. '58
George Sarkis Caleel, D.O. '05
Ronald Flauto, D.O. '96
Michael Keer, D.O. '76, and Nadine Keer, D.O. '76
David Lustig, D.O. '65
Neil Superfon, D.O. '64
Douglas P. Webster, D.O., FACOEP '85

Nicholas and Mia Kasimos
John N. Kasimos, D.O., M.S., M.S.H.C.E. '84, and Helen Papadakis-Kasimos

Sarah Keller, PT, D.P.T., NCS
David and Nancy Keller
Elizabeth King Powers
Mark Reinsch
Fred D. Romano, Ph.D., M.S.

Pritham Khalsa
Katherine Worden, D.O.

Osaid Raza Khan
Michael J. Fay, Ph.D., and Dana Fay

Mariette M. Kimpam
Shari Burns, CRNA, Ed.D.

Robert A. Kistner, D.O. '41
Nicholas M. DiFilippo, D.O. '74, and Margaret DiFilippo
Charles A. Neumann, D.O. '75

Mathew Kobak
Sharon A. Kobak, D.O. '73

Ed and Sue Kolsen
Joby Kolsun, D.O. '92

George N. Krates, D.O. '53
Stephen G. Krates, D.O. '81

Richard J. Krejsa, D.O. '76
Michael A. Keer, D.O. '76, and Nadine E. Keer, D.O. '76
Gloria Krejsa

Norman J. Larson, D.O. '35
Kermit C. Smith, D.O., M.P.H. '66, and Mary E. Larson Smith

Anthony J. Malcoun, D.O. '64
Edward O. Riley, D.O. '64

Seymour Mandell
William J. Mandell, D.O. '73



Your Gift Matters to our Students.

As a graduate of Midwestern University, you are part of a tradition of excellence and leadership in healthcare education. With your support of the Annual Fund, students today may pursue educational goals and experiential opportunities that will change their lives forever. Your gift matters.

Your annual gift may be designated toward your college for scholarships, or where the need is greatest.



To donate online, visit:
<http://online.midwestern.edu/giving>
or text GIVE to 53780



Join Us Online:



facebook.com
/MidwesternUniversity



instagram.com
/midwesternuniv/



linkedin.com
/school/midwestern-university/



youtube.com
/user/MidwesternUniversity



tiktok.com
/@midwesternuniversity



threads.net
/@midwesternuniv



x.com
/MidwesternUniv

Downers Grove Campus
555 31st Street
Downers Grove, Illinois 60515

www.midwestern.edu
800-962-3053

Glendale Campus
1955 NORTH 59TH AVENUE
GLENDALE, ARIZONA 85308

<http://online.midwestern.edu/giving>
or text GIVE to 53780

Joel T. Martin, D.O. '73
Stanley B. Kantor, D.O. '73

Ronald and Inez McKinley
Michael K. McKinley, Pharm.D. '96

Mitz Merele
Lindsay B. Mitz, Pharm.D. '07

Victor L. Michels, D.O. '75
Saveria Michels

Brian G. Minor, D.O. '69
Richard A. Herbert, D.O. '71

Rome Mongkolpradit
Tara Mongkolpradit, Pharm.D. '07

Honey Parrish
Peoria Animal Hospital, PLLC

Charles E. Payne, O.F.M., Ph.D.
John S. Golden, D.O. '85
Jerry P. Oliaro, D.O. '85
Michael A. Pasquarella, D.O. '84
Pamela R. Seaman, D.O. '89
F.B. Shannon, D.O. '80

Ward E. Perrin, D.O. '43, and Dorothy Perrin
Perry Carlos, D.O. '74
John Gobel, D.O. '72
Michael E. Hagan, D.O. '74
Michael A. Keer, D.O. '76, and Nadine Keer, D.O. '76
Lawrence Lief, D.O. '65
Jean Loludice, D.O. '72
William J. Mandell, D.O. '73

Charlotte Petersen
John M. Petersen, D.O., FACG '79

Michael Popoff, D.O. '68
Linda S. Popoff

Venkatray Prabhu, Ph.D.
Marc H. Brickman, D.O. '90

Karla Purdy
Paula Kourian
Gregory O'Coynce, CPA, and Jenny Schultz
Brian Purdy, CPA
Linda Schwerzler
Matthew Sweeney, CPA

Mary Ann Pyrak
Theodore J. Pyrak

Dino and Theresa Raffaelli
Dean A. Raffaelli, D.C., D.O. '97, and Charlotte Keer

Samra Rafiq
Garo Paul Green

Barbara J. Ralston
Ronald Bahling

Dennis A. Reter, D.O. '71
Dennis W. Cappitelli, D.O. '71, and Lana Cappitelli

Manuel P. Saridakis, D.O. '74
George P. Saridakis, D.O. '81

Aunt Shirley
Marc P. Cohn, D.D.S.

Avery Spunt, M.Ed., RPh
Susan Cornell, Pharm.D. '02, and David A. Cornell, D.O. '84
Andrew Donnelly, Pharm.D.
Nancy Fjortoft, Ph.D.
Mary W. L. Lee, Pharm.D., BCPS, FCCP
Tara Mongkolpradit, Pharm.D. '07

BoBo Stenback
Peoria Animal Hospital, PLLC

Kenneth A. Suarez, Ph.D.
Eileen Suarez

Henry W. Witte, D.O. '53, and Betty Witte
Richard Herbert, D.O. '71
Ted and Ruth Ogden

Ron Woodbeck, RPh
Dolly Alexander, M.A.
Kathy J. Barker
Richard and Sharon Battaglia
Clifford and Helaine Bell
Susan K. Berner
Sheri Brownstein, D.M.D.
Victor and Rose Chirkin
Stephanie Cotton Christensen, Ph.D., CCC-SLP
Margaret Chrymko
Tony and Cynthia Diefert
Charles Dizard
James and Sheila Doud
Mitchell R. Emerson, Ph.D., and Tara Emerson
Michael and Sandra Escuder
Donna Esposito
Kathleen Fairman
Barbara Farmer
Staci A. Glass and George Glass
Teresa Gonsalves
Barbara H. Griffa
Kay Krieger
Susan Ksiazek
David and Karen Lester

Bob and Ann McCarthy
Nolawi and Sangeeta Mengesha
Tuyen Mey
Tom and Lynne Moore
Eugene and Kathleen Morse
Michael Mullaney
Lynn R. Patton, M.S., RPh., BCNSP
Theodore J. Pyrak
Erin C. Raney, Pharm.D., BCPS
Catherine Reinard
Lonnie Sbert
Eleanor J. Smith
Adam and Heather Troidl
Alan Troidl
Michael Troidl
Tim and Paige Wangler
Elizabeth A. Warren
Frank and Suzan Woodbeck

Brent Thomas Wright
Colonel Walter Wright, USAF, Retired, and Ingrid Wright
Terri Wright Chrones

Lewin Wyatt Jr., D.O. '78
Lillie Wyatt

GIFTS-IN-KIND

Rick Dougherty
Delta Dental of Arizona Foundation
Pamela A. Georgeson, D.O., FAAAAI '83
Tiffany Hansen
David G. Holzworth, D.O. '73
Matthew E. Kaiser
Denise Mills, D.D.S., M.H.A., Ed.D.
Dr. Laurel Mueller
Precise Printing Network, Inc.
Robert Saretsky, D.O.
F. Robert Suchyta, D.O. '73
Kelly Talbott, M.B.A., CVPM

ENDOWED FUNDS

CHICAGO COLLEGE OF OSTEOPATHIC MEDICINE NAMED STUDENT SCHOLARSHIPS

Russell B. Bissell, D.O., Memorial Scholarship
Homer and Mabel Bramlet and Frank and Cora Keest Memorial Scholarship

The Brophy Family Scholarship
Kristian S. Burkland Student Scholarship
Rebecca and George Caleel Student Scholarship
CCOM Alumni Association Merit Scholarship
CCOM Alumni Reunion Scholarship
Mary E. Cranker CCOM Scholarship Fund
Kenneth W. DeByle, D.O., Scholarship
The Dobbertien Family Scholarship
Leonard L. Dunworth, D.O., FACOS, and Mary Jane Dunworth Scholarship
Phillip F. Dupont, M.D., Ph.D., Memorial Student Scholarship
The Fabaz Family Scholarship
Herbert O. Feldman, D.O., and Charlotte F. Feldman Scholarship
Diane Gaus Memorial Scholarship
Professor Anil Gulati, M.D., Ph.D., Scholarship
Harold Hakes, Ph.D., J.D., Memorial Scholarship
Frederick E. Hecker, D.O., and Robert R. Magliocco, D.O., Memorial Scholarship
Dr. Abbas Othman Jibril Scholarship Fund
Robert Kappler, D.O., FAAO, Memorial Scholarship Fund
Nicholas J. Kasimos Memorial Scholarship
The Howard S. Kessler, D.O. '72 and Karen Kessler Scholarship
Dr. Edward and Mrs. Gaye Russell Kinkopf Scholarship
Richard J. Krejsa, D.O., Memorial Student Scholarship
Dr. David and Mrs. Brenda Kuo Student Scholarship
Norman Larson, D.O., Memorial Student Scholarship
The Matheu Family Endowment Fund
Mavian Student Scholarship Fund
McCarty Family Fellowship
Paul S. McCord, D.O., Memorial Scholarship

Dr. Wesley and Mary McGinnis Memorial Scholarship

Stephen K. Mihalich Memorial Clinical Rotation Fund

Albert Molisky, D.O. '53 Scholarship Fund

Dr. David Monash Memorial Scholarship

Jeffrey T. Nanns, D.O., Memorial Scholarship

Olympia Fields Service League Guild Student Scholarship

Dr. Ward and Mrs. Dorothy Perrin Scholarship

Phyllis Player Memorial Scholarship

Louis G. Poulos, D.O., Memorial Award
Dennis A. Reter, D.O., Scholarship Fund

The Sachedina / Lichtenberger Scholarship by Shenin Sachedina, D.O., FACOS

The Sefcik Family Scholarship

Mr. and Mrs. Frank Suchyta Scholarship

Daniel Sullivan, D.O., Scholarship

The Susarla Family Scholarship

Michael B. Tierney, D.O., and Cynthia W. Tierney, B.S.N., RN, Student Scholarship

Dr. Michael Walczak Student Scholarship

Henry W. Witte, D.O. and Betty J. Witte Memorial Scholarship

CHICAGO COLLEGE OF OSTEOPATHIC MEDICINE NAMED STUDENT LOANS

Drs. Clarence and Birdice Beal Memorial Loan

Dr. Martin C. Beilke Memorial Loan

Dr. Harry L. Collins Memorial Loan

Dr. and Mrs. Robert Dolehide Loan

Edna Dunning Memorial Loan

Ernst and Young Loan

Lawrence A. Hill Memorial Loan

Dr. Don Hollandsworth Loan

Margaret Hollandsworth Loan

† Deceased

Charles O. Jarasek Memorial Loan
 Dr. Harold Katzen Memorial Loan
 Dr. Donald Lindley Memorial Loan
 Dr. Culmer C. and Agnes R. Lucas Memorial Loan
 Dr. Arvilla McCall Rose Memorial Loan
 Midwest Physician Group Loan
 Dr. Leonard Rench Memorial Loan
 RMA Investment Company Loan
 Dr. Harold R. Schildberg Memorial Loan
 St. James Hospital Medical Staff Loan

**CHICAGO COLLEGE OF
 OSTEOPATHIC MEDICINE
 RESEARCH FUND**

Dr. Michael Walczak Research Award

**ARIZONA COLLEGE OF
 OSTEOPATHIC MEDICINE NAMED
 STUDENT SCHOLARSHIPS**

AZCOM Dean's Student Leadership Award
 Shirley A. Brysacz Scholarship
 Edna Dunning AZCOM Scholarship Fund
 Betty Iura Memorial Scholarship
 Karla Purdy Memorial Scholarship
 Tejinder Singh Kahlon Scholarship
 Tempe St. Luke's Medical Staff George Craft, M.D., Memorial Scholarship

**ARIZONA COLLEGE OF
 OSTEOPATHIC MEDICINE
 NAMED STUDENT LOAN**

Dr. Culmer C. and Agnes R. Lucas Memorial Loan

**ARIZONA COLLEGE OF
 PODIATRIC MEDICINE**

Bako Medical Education Foundation Scholarship
 Meyer Friedlander and Milton Klasky Tikkun Olam Scholarship

Carol A. Jensen Innovation in Podiatric Medicine Research Scholarship
 Johnson and Johnson Wound Management Scholarship
 Irvin O. Kanat, D.P.M., Diabetic Foot Research Scholarship
 Earl G. Kaplan, D.P.M., Surgical Research Scholarship
 Anita J. Moynihan Wound Care Scholarship
 PICA Scholarship
 William F. Todd, D.P.M., Biomechanics/ Sports Medicine Research Scholarship

**COLLEGE OF PHARMACY'S
 DOWNERS GROVE NAMED
 STUDENT SCHOLARSHIPS**

CPDG 20th Anniversary Alumni Scholarship
 CPDG Legacy Scholarship
 CPDG Award for Academic Excellence
 The Dhingra Family Scholarship
 John and Angie Dik Scholarship
 Milo Gibaldi, Ph.D., Award for Research and Scholarship
 Paula Giometti Memorial Scholarship
 Professor Anil Gulati, M.D., Ph.D., Scholarship
 George Lee Prize
 Meijer Scholarship
 Rachel M. and Willard C. Schmidt Scholarship
 Mary Beth Stanaszek, Pharm.D. '97, Memorial Scholarship
 Dr. Beverly Talluto Memorial Scholarship
 Walgreen's Scholarships

**COLLEGE OF PHARMACY,
 GLENDALE NAMED STUDENT
 SCHOLARSHIPS**

Fry's Pharmacy Scholarship
 Heritage of Pharmacy Scholarship
 Robert C. Johnson Leadership Award

Craig Alan Johnston, Ph.D., Memorial Scholarship
 Kmart Pharmacy Scholarship
 Dennis J. McCallian, Pharm.D., Scholarship

**COLLEGE OF DENTAL MEDICINE
 – ILLINOIS NAMED STUDENT
 SCHOLARSHIP**

American Dental Partners Foundation Endowed Scholarship
 Delta Dental of Illinois Scholarship
 The CDMI Inaugural Class of 2015/ Dean Lex MacNeil Scholarship Fund

**COLLEGE OF DENTAL MEDICINE
 – ARIZONA NAMED STUDENT
 SCHOLARSHIPS**

Bien-Air Dental Scholarship
 Marc P. Cohn, D.D.S., FICD Family Scholarship
 Dental Faculty Memorial Scholarship
 Designs for Vision – Peter J. Murphy Memorial Scholarship
 Logan Doseck Scholarship
 Dr. and Mrs. Russell O. Gilpatrick Scholarship
 Russell O. Gilpatrick, D.D.S., and Arthur A. Dugoni, M.S.D., D.D.S., Scholarship
 Dr. Ronald D. and Mrs. Ileana Giordan Scholarship
 Ivoclar Vivadent Scholarship
 Dr. Blake G. Osborn Memorial Scholarship
 Todd K. Wilcox, D.M.D. Memorial Scholarship

**ARIZONA COLLEGE OF
 OPTOMETRY NAMED STUDENT
 SCHOLARSHIPS**

Dr. Donald and Mrs. Sharon Jarnagin Scholarship
 Dr. Donald Jarnagin Award of Excellence Scholarship
 Jerilyn and William Cowen Scholarship for Excellence

**CHICAGO COLLEGE OF
 OPTOMETRY NAMED STUDENT
 SCHOLARSHIP**

Dr. Newton K. Wesley Foundation Fund Scholarship

**COLLEGE OF HEALTH
 SCIENCES – GLENDALE, AZ
 CAMPUS NAMED STUDENT
 SCHOLARSHIP**

Amy Hillier Chervenak Heroes for Health Scholarship

**MIDWESTERN UNIVERSITY –
 GLENDALE, AZ CAMPUS NAMED
 STUDENT SCHOLARSHIPS AND
 ENDOWMENTS**

APS Scholarship
 Blue Cross Blue Shield of Arizona Scholarship
 DWL Architects + Planners Scholarship
 Grand Canyon University Scholarship
 Dr. and Mrs. Devinder Singh Endowment
 TriWest Healthcare Alliance Scholarship
 Wells Fargo Scholarship

**MIDWESTERN UNIVERSITY –
 DOWNERS GROVE, IL CAMPUS
 NAMED STUDENT SCHOLARSHIP**

Drs. Reshmi and Mahmood Siddique Scholarship

**DUAL CAMPUS NAMED
 STUDENT SCHOLARSHIPS AND
 ENDOWMENTS**

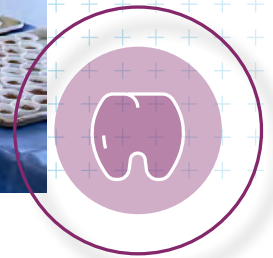
Acadental Education Scholarships
 John R. Burdick, Ph.D. Fund for International Medicine
 Chanan Construction Scholarship
 Arthur G. Dobbelaere, Ph.D., Student Scholarship Fund
 Barbara L. McCloud Scholarship

MWU Scholarships
 MWU Spirit of Service Scholarship
 National Vision Admissions Scholarships
 VSP Vision Admissions Scholarships



In this section: Year in Review 2024

The MWU Student Senate organizes the annual **Taste of Midwestern** on the Downers Grove Campus, celebrating the University's diverse cultures and cuisines.



JANUARY

Students **return to both campuses** in January, ready to kick off the new semester with renewed energy following the winter break.



The Midwestern University Osteopathic Postdoctoral Training Institute and the Arizona College of Osteopathic Medicine (AZCOM) conduct the annual Rotation and **Residency Opportunities Day** for second- and third-year AZCOM students. During the event, students connect with osteopathic, allopathic, and military residency training programs, as well as AZCOM alumni.



The Midwestern University Dental Institute's **Give Kids a Smile** event in Arizona provides free dental care and consultations for children ages 6 to 14, including screenings, cleanings, sealants, fillings, and/or extractions. The Give Kids a Smile program is part of a nationwide initiative to offer dental care for children in need.



The **25th Annual Arizona Regional Brain Bee** hosts 47 students from 15 Phoenix Valley high schools, with Midwestern University student and faculty volunteers serving as judges, question readers, and scorekeepers. Local Mountain Ridge High senior Rishi Suresh wins the event and places second at the 2024 U.S. National Brain Bee after a tiebreaker.



Students from the Arizona College of Osteopathic Medicine Ultrasound Interest Group spearhead the 4th Annual Arizona **UltraFest**, uniting healthcare students and physicians statewide in an educational ultrasound symposium aimed at enhancing their understanding and appreciation for sonography.

FEBRUARY



The annual **Health Sciences Career Day for High School Students**, held on both campuses, provides nearly 1,000 students from Arizona and Illinois with valuable insights into various healthcare fields.



Sixty-four graduates receive the **Doctor of Pharmacy degree** from the College of Pharmacy, Downers Grove, marking the start of their healthcare careers.



Arizona State D.O. Day brings together Arizona College of Osteopathic Medicine students and other osteopathic medicine students to collaborate with state legislators, engage in discussions about bills affecting physicians and patient safety, and attend valuable educational sessions to enhance their understanding of the legislative process and the significance of advocacy in policymaking.



The Arizona College of Osteopathic Medicine welcomes **Teresa Hubka, D.O., FACOOG**, to the Glendale Campus. Dr. Hubka, Chair of the OBGYN Department, Chicago College of Osteopathic Medicine (CCOM), began her term as the American Osteopathic Association (AOA) President in July.



More than 100 healthcare partners and Northwestern University friends arrive at the Arrowhead Country Club in Glendale, AZ for the annual **Chippin' in for Students Golf Classic** to raise money to support student scholarships.

Midwestern University hosts ceremonies on both campuses to induct first-generation faculty, staff, and students into the Alpha Alpha Alpha **National First-Generation Honor Society** and celebrate their accomplishments.



MARCH



The **Chicago College of Optometry** holds its second annual career fair, during which optometry students had the opportunity to interact with more than 20 employers and participants in the field.



As part of the American Osteopathic Association **DO Day on Capitol Hill**, a delegation from the Chicago College of Osteopathic Medicine conducts multiple meetings with lawmakers to address issues such as patient access to care, expanding medical education, and supporting student loan reform.



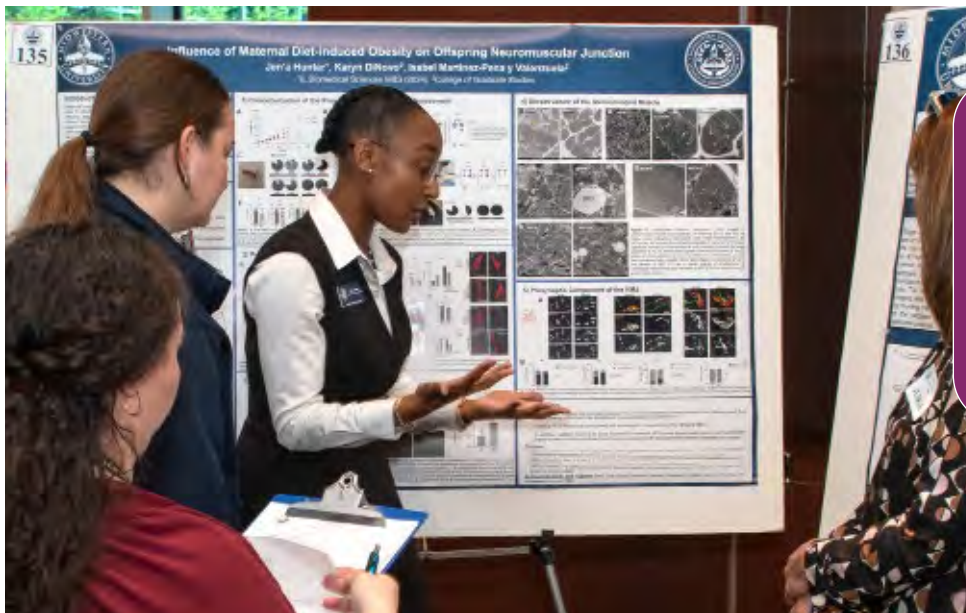
The Downers Grove Campus hosts **An Evening of Inspiration** featuring Notre Dame alumnus and motivational speaker Daniel "Rudy" Ruettiger for a special presentation on resiliency, beating the odds, and achieving goals. Mr. Ruettiger's story was popularized in the 1993 film Rudy.



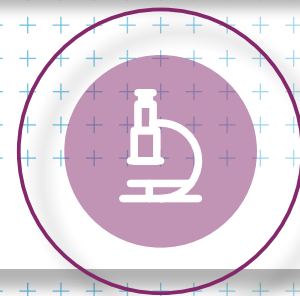
APRIL

MWU student mentors from the Midwestern University **Mentors in Medicine and Science Mentorship Program** invite their undergraduate mentees to the Glendale Campus for an evening in the Clinical Skills and Simulation Center. Mentees from ASU, GCU, Estrella Mountain Community College, and the Maricopa Community Colleges attend the event to learn hands-on examination, intubation, and vital signs skills.





The annual **Dr. Kenneth A. Suarez (KAS) Research Day** takes place on the Glendale Campus in April and the Downers Grove Campus in May, featuring a total of 376 posters highlighting student authors and faculty mentors, emphasizing interdisciplinary collaborations, and fostering connections with local industries and universities for potential conference and journal presentations.



APRIL

The **Arizona College of Optometry** hosts the 12th Annual Residents' Day, which includes CE training on opioid use and issues.



Student Leader Recognition Night on the Downers Grove Campus highlights service accomplishments by Midwestern University students.



The Glendale Campus hosts **Take Steps for Crohn's**, a fundraising event held as part of the Crohn's & Colitis Foundation's annual Take Steps Walk. The event raises funds for research, education, and support for people with Crohn's disease and ulcerative colitis.





Groovin' in the Grove 5K Run & Walk takes place on the Downers Grove Campus, raising money for Sharing Connections, a non-profit organization assisting people in need with furniture and household items.



Graduates from various healthcare fields are honored during **military commissioning ceremonies** on both campuses as a tribute to their commitment and service to the nation.

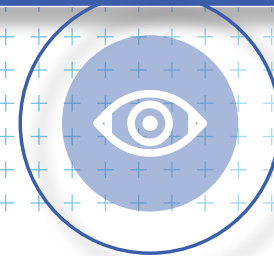
MAY



Midwestern University celebrates the **graduation** of master's and doctoral degree recipients at several ceremonies during the month of May on its Downers Grove, IL, and Glendale, AZ campuses. More than 1,600 graduates participate in 13 commencement ceremonies and begin their professional careers in healthcare.



The annual **Health Careers Institute for High School Students** takes place on both campuses, providing high school students from across Arizona and Illinois with advanced workshops in anatomy and clinical skills, exposure to over 24 healthcare careers, and mentorship on college preparation, all aimed at inspiring the next generation of healthcare professionals through collaboration and professionalism.



JUNE



Both campuses offer hands-on **optometry workshops**—AZPOP in Glendale and Summer SEE in Downers Grove—designed for undergraduate students interested in the health sciences to explore a career in optometry.



The University announces plans for a new **College of Veterinary Medicine—Illinois** on the Downers Grove Campus and names **Coretta Cosby Patterson, D.V.M., DACVIM-SA**, as Dean of the proposed College.



The annual Midwestern University **Chippin' in for Students Golf Classic** raises money to support students on the Downers Grove Campus through Spirit of Service Scholarships.



PharmAcademy, organized by the College of Pharmacy, Downers Grove, educates high school students about pharmacy careers and future college choices, attracting 42 students from surrounding area.



Midwestern University's **Speech-Language Institute** in Downers Grove offers quarterly pre-school programs for children with developmental language issues.



JULY

High school sophomores from the Creating Pathways and Access for Student Success Foundation, which supports **students interested in STEM and medicine**, visit the Downers Grove Campus to explore healthcare fields, tour facilities, and receive academic guidance. Their visit is organized by Coretta Patterson, D.V.M., DACVIM, Dean, proposed College of Veterinary Medicine-Illinois.





College students who are considering pursuing a dental career enjoy a preview of dental school as part of a **Pre-Dental Day** hosted by the American Student Dental Association (ASDA) and the American Dental Education Association (ADEA) on both campuses.



AUGUST



The **College of Health Sciences** graduates 272 new alumni total from the Downers Grove and Glendale campuses and they embark on rewarding careers in the fields of clinical psychology, occupational therapy, physician assistant, and nursing.



The **MWU Kids Day** welcomes children of employees to the Downers Grove Campus in August and the Glendale Campus in October. Both days offer informative sessions and an opportunity for kids to gain insights into their parent, relative, or guardian's professional lives.

The Glendale Campus hosts the third annual **Special Olympics MedFest**. Faculty, students, and alumni from the University's Graduate Nursing Programs, Arizona College of Podiatric Medicine, Arizona College of Osteopathic Medicine, College of Dental Medicine–Arizona, and Clinical Psychology, Physical Therapy, and Speech-Language Pathology Programs collaborate with healthcare students from the Peoria Medical Engineering and Technology (MET) Professional Academy to run this program.



Midwestern rolls out the red carpet on both campuses for watch parties of Midwestern University's **College Tour episode on Amazon Prime**. The episode tells the story of Midwestern University through the perspectives of 18 students from several degree programs representing both campuses.



SEPTEMBER

The 2024-2025 academic year kicks off with a warm welcome to **1,985 new students** across both campuses, representing a diverse group from all 50 states and 61 international students. The new students participate in orientation activities, from white coat fittings to community service projects, as they begin their journey toward healthcare professions.



More than 1,300 first-year Midwestern University students total from the Downers Grove and Glendale campuses participate in annual **White Coat Ceremonies**. During each ceremony, students take an Oath of Commitment, including vows to acquire the necessary skills and knowledge of a healthcare provider, assume responsibility for the healthcare field they are trained in, respect their faculty, and value their predecessors in their profession.



OCTOBER



The **Ward E. Perrin, D.O. Clinical Refresher Course** brings physicians and physician assistants together for an engaging two and a half-day conference packed with the latest in medical information and an opportunity to reconnect at the **Chicago College of Osteopathic Medicine Alumni Reunion**.



The Midwestern University Dental Institute on the Glendale Campus hosts its annual **Veterans Dental Day**, providing free dental care and consultations to 103 Valley military veterans in need.

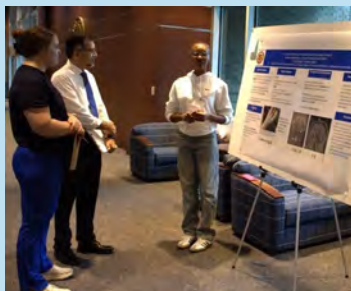


The College of Pharmacy on the Downers Grove Campus hosts **CAREERxPO**, where recruiters from over 35 retail pharmacies, hospitals, and other healthcare organizations make themselves available for students to ask questions about full-time careers, part-time jobs, internships, residencies, and other pharmacy career possibilities.



The **Mentors in Medicine & Science** program

pairs undergraduate students with Midwestern University students from all 13 University colleges, representing over 24 different healthcare career tracks on both campuses. The program provides monthly communication between MWU mentors and their undergraduate partners about potential careers, good study habits, entrance exam test-taking, positive mental health, goal setting, and navigating the process of applying to graduate and professional schools.



Chicago College of Osteopathic Medicine student volunteers wrap up the **Mini-Med School program**, through which high school and college-aged participants develop technical skills in first aid, learn basic medical skills, and receive mentorship from physicians and medical students.



Midwestern University presents a special **Candlelight Concert** featuring music from *The Beatles* on the Glendale Campus to honor VIP Partners for their generous support of the *Spirit of Service* scholarship programs, which continue to transform student lives and advance educational excellence.

NOVEMBER

The College of Veterinary Medicine hosts its **10th Anniversary Celebration**, inviting families of faculty, staff, and students to the Glendale Campus to enjoy outdoor games, music, crafts, gifts, treats, and other activities to commemorate the College's tenth year of existence in Arizona.





Midwestern University students serving in the military celebrate their Army, Navy, and Air Force **residency matches** with special events on both campuses.

DECEMBER



The Glendale Campus partners with the **West Valley Symphony** to present Sounds of the Season, a free community concert for more than 800 attendees.

The Littlejohn Scholarship

Make an impact—support our new scholarship today.



To mark CCOM's 125th anniversary, we are launching a new initiative - the Littlejohn Scholarship - designed to honor our founders and support the students who will continue to advance the values and progress of osteopathic medicine for generations to come. Please consider celebrating with us and supporting our new scholarship.





19555 North 59th Avenue | Glendale, Arizona 85308

Biomedical Sciences	Precision Medicine
Cardiovascular Science	Public Health
Clinical Psychology	Speech-Language Pathology
Dental Medicine	Veterinary Medicine
Nurse Anesthesia	
Graduate Nursing	
Occupational Therapy	
Optometry	
Osteopathic Medicine	
Pharmacy	
Physical Therapy	
Physician Assistant	
Podiatric Medicine	

555 31st Street | Downers Grove, Illinois 60515

Biomedical Sciences
Clinical Psychology
Dental Medicine
Graduate Nursing
Occupational Therapy
Optometry
Osteopathic Medicine
Pharmacy
Physical Therapy
Physician Assistant
Precision Medicine
Public Health
Speech-Language Pathology

